



**JOHN
HOLLAND**

INLAND RAIL ILLABO TO STOCKINBINGAL PROJECT

EPL Monthly Monitoring Report
May 2026

Document Number: 6-0019-220-PES-00-RP-0001

Document Status: Issued for Use

Revision: 0



Document Control

Document Title	EPL Monthly Monitoring Report – May 2026	
IRPL Document No.	6-0019-220-PES-00-RP-0001	
Prepared By	[REDACTED]	
Document Owner	[REDACTED]	
	REVIEWED BY	APPROVED BY
Name	[REDACTED]	[REDACTED]
Title	[REDACTED]	[REDACTED]
Signature		
Date		

Revision History

REVISION	DATE ISSUED	DESCRIPTION
0	18/06/2026	Issued for Use

Revision No: 0

Issue Date: 18/06/2026

IRPL Document Number: **6-0019-220-PES-00-RP-0001**

When printed this document is an uncontrolled version and must be checked against the Aconex electronic version for validity



Table of Contents

1	Introduction	4
1.1	The Project	4
1.2	Report Scope.....	7
1.3	Reporting Requirements	7
2	Monitoring.....	10
2.1	Weather.....	10
2.2	Water.....	12
2.3	Noise	13
2.4	Noise – Blasting.....	18
2.5	Pollution Complaints	19
	Appendix A Premise Maps – May	20
	Appendix B EPL Water Discharge Points.....	21
	Table 2-1 Details of EPL 22021	7
	Table 2-2 EPL 22021 monitoring requirements	8
	Table 3-1 Weather Monitoring Data – May 2026.....	10
	Figure 1-1 Project locality (Source: Illabo to Stockinbingal - Environmental Impact Statement, 2022)	5
	Figure 1-2 Key Project features (Source: Illabo to Stockinbingal - Environmental Impact Statement, 2022)	6



1 Introduction

1.1 The Project

The Project is located in south-western New South Wales (NSW) in the Riverina region (refer to

Figure 1-1). Illabo is a small town located at the southern end of the alignment 16 kilometres (km) north-east of Junee in the Junee Local Government Area (LGA).

Stockinbingal is situated at the northern end of the Project, approximately 20 km north-west of Cootamundra in the Cootamundra–Gundagai Regional LGA. The major towns surrounding the Project are Wagga Wagga, about 50 km to the south, Young to the north-east and Cootamundra to the east.

The Project comprises a new rail corridor that would connect Illabo to Stockinbingal. The alignment branches out from the existing rail line north-east of Illabo and travels north to join the Stockinbingal–Parkes Line west of Stockinbingal. The route will travel primarily through undeveloped land predominantly used for agriculture.

The Project includes modifications to the tie-in points at Illabo and Stockinbingal to allow for trains to safely enter and exit the Illabo to Stockinbingal section of Inland Rail. The alignment also crosses several local and private roads, watercourses and privately owned properties. Additionally, no major towns are located within the Project site between Illabo and Stockinbingal.

The Project will include a total extent of approximately 42.5 km, including 39 km of new, greenfield railway which will incorporate the following key features:

- single track standard gauge on a combination of existing ground level embankments and within cuttings
- new bridges and road overpasses
- crossing loop and maintenance siding
- new level crossings, stock crossings and upgrades to existing level crossings
- new major stormwater diversion and minor drainage works associated with installation and upgrades to culverts.

The Project will also include upgrades to approximately 3 km of existing track associated with tie-in works and construction of an additional 1.7 km of new track to maintain the existing rail network connections. Road upgrade works will also be undertaken to re-align approximately 1.4 km of Burley Griffin Way to provide a road-over-rail bridge at Stockinbingal. Re-alignment of Ironbong Road will also be completed to allow for safe sight lines. A temporary workforce accommodation camp will also be constructed to house the workforce for the duration of the Project.

Project locality and key features of the Project are shown on Figure 3-1 and **Error! Reference source not found..**

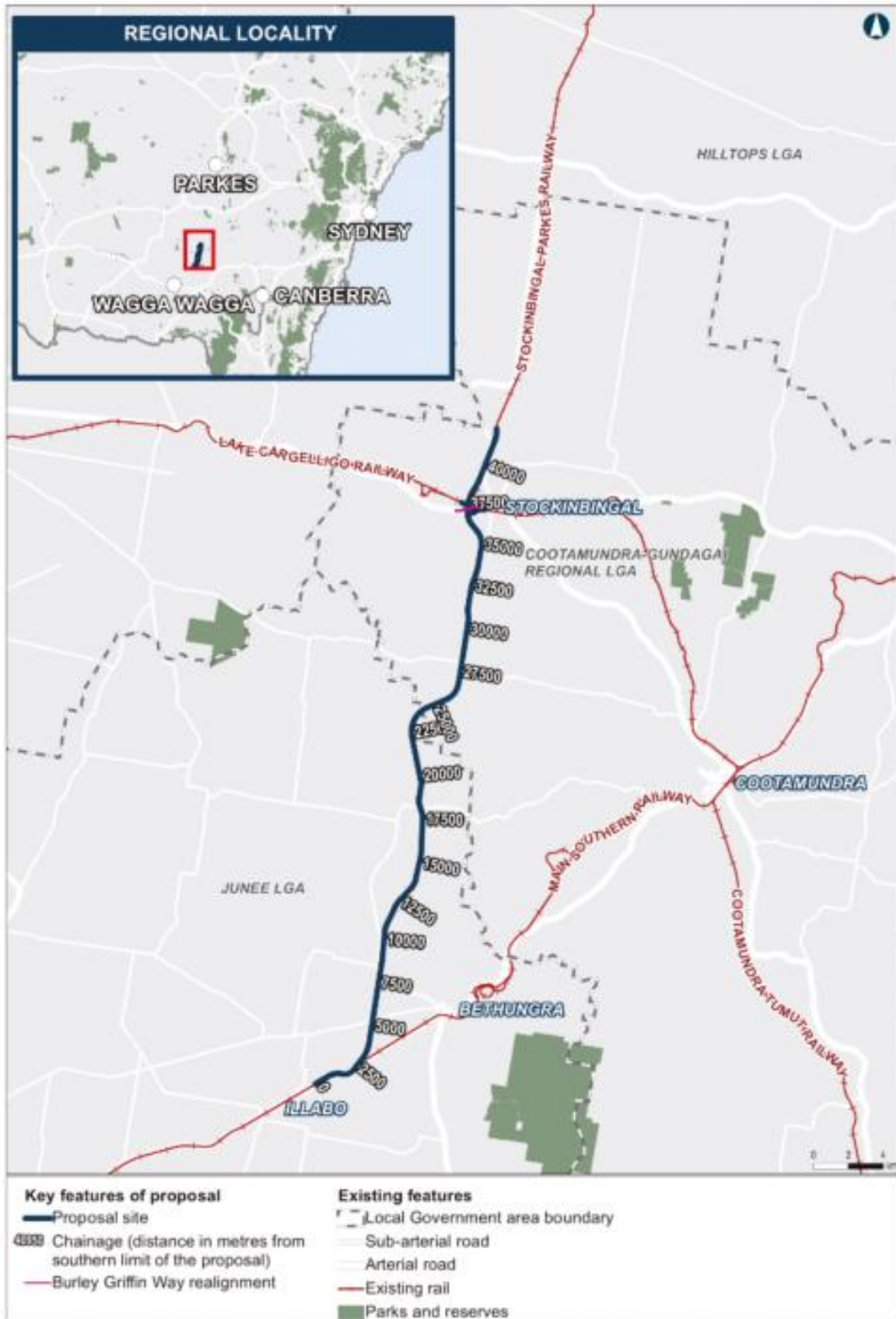


Figure 1-1 Project locality (Source: Illabo to Stockinbingal - Environmental Impact Statement, 2022)

Revision No: 0

Issue Date: 18/06/2026

IRPL Document Number: 6-0019-220-PES-00-RP-0001

When printed this document is an uncontrolled version and must be checked against the Aconex electronic version for validity

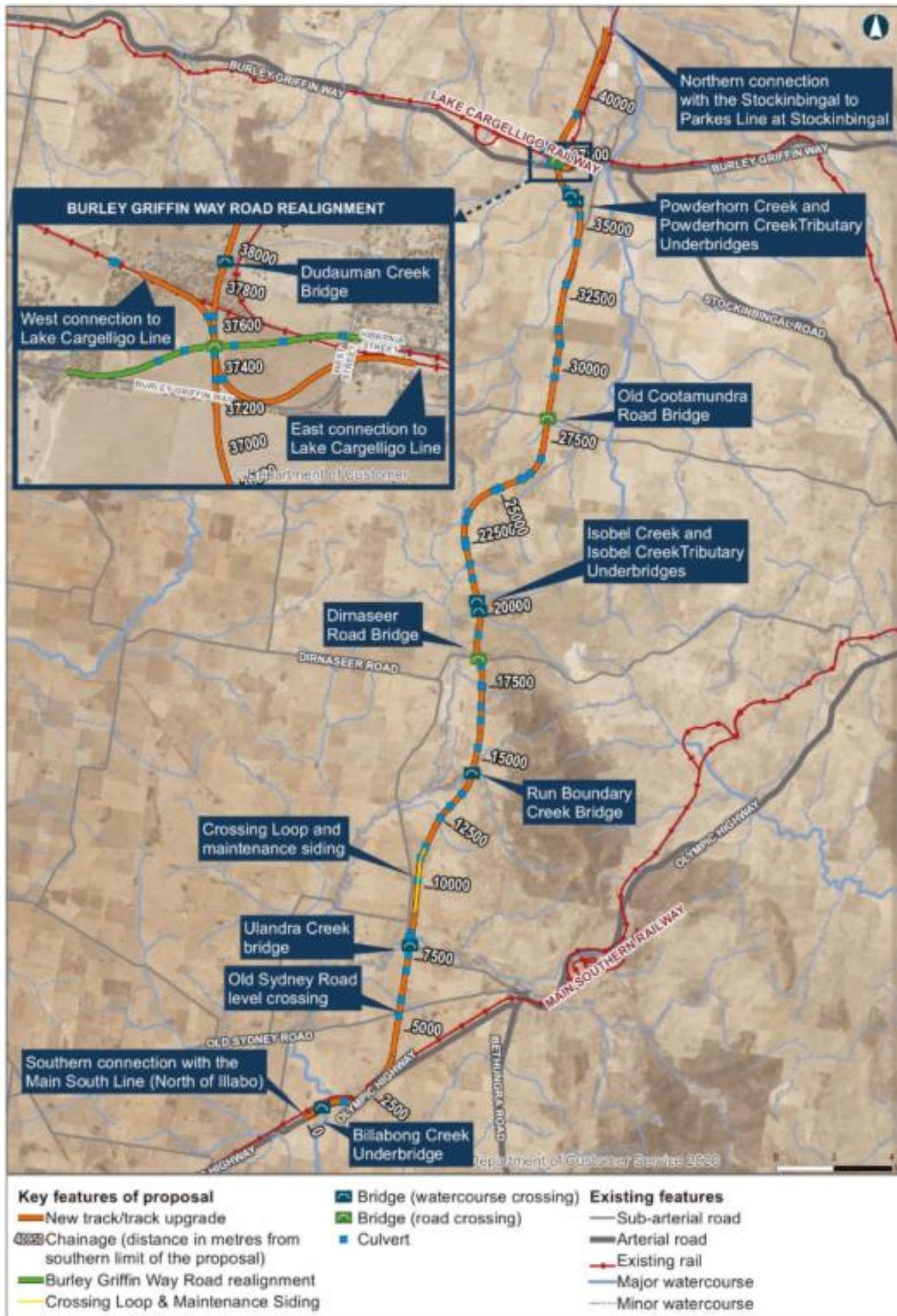


Figure 1-2 Key Project features (Source: Illabo to Stockinbingal - Environmental Impact Statement, 2022)

Revision No: 0

Issue Date: 18/06/2026

IRPL Document Number: 6-0019-220-PES-00-RP-0001

When printed this document is an uncontrolled version and must be checked against the Aconex electronic version for validity



1.2 Report Scope

John Holland Group have been issued an Environment Protection Licence (EPL No. 22021) from NSW Environment Protection Authority (EPA) for Inland Rail – Illabo to Stockinbingal (I2S) Project. The EPL applies to the works approved under the Conditions of Approval for Inland Rail – Illabo to Stockinbingal SSI 9406.

This EPL Monthly Monitoring Report provides the results of all pollution monitoring required to be measured or monitored by the licensee of EPL 22021 as required by Section 66 of the Protection of the Environment Operations Act 1997 (POEO Act) and with reference to EPA Publication Requirements for publishing pollution monitoring data (Environment Protection Authority, 2013).

Table 2-1 provides a summary of the EPL 22021.

Table 1-1 Details of EPL 22021

Name of licensee:	JOHN HOLLAND PTY LTD
ACN	004 282 268
EPL number:	22021
Issue date:	26 Aug 2025
Premises name and address:	ILLABO TO STOCKINBINGAL (FUTURE RAIL CORRIDOR IN CONSTRUCTION FOOTPRINT), STOCKINBINGAL NSW 2725
Scheduled activity/activities on EPL:	Railway activities - railway infrastructure construction

The EPL can be found by following the link below to the EPA's website: [EPL 22021](#)

1.3 Reporting Requirements

Under the POEO Act, holders of environment protection licences (licensees) must publish or make pollution monitoring data available to members of the public.

The POEO Act Section 66 requires

“66 Conditions requiring monitoring, certification or provision of information, and related offences

(1) The conditions of a licence may require—

(a) monitoring by the holder of the licence of the activity or work authorised, required or controlled by the licence, including with respect to—

- (i) the operation or maintenance of premises or plant, and
- (ii) discharges from premises, and
- (iii) relevant ambient conditions prevailing on or outside premises, and
- (iv) anything required by the conditions of the licence, and

(b) the provision and maintenance of appropriate measuring and recording devices for the purposes of that monitoring, and

(c) the analysis, reporting and retention of monitoring data.

(2) False or misleading information A holder of a licence who supplies information, or on whose behalf information is supplied, to the appropriate regulatory authority under the conditions of the licence is guilty of an offence if the information is false or misleading in a material respect.”



The primary objective of the pollution monitoring reporting requirements is that members of the public have access to the results of all pollution monitoring (which a licence specifies must be carried out) in a way that is meaningful to them. Data for the is presented on a monthly sampling period. Table 2-2 provides a summary of the monitoring requirements of EPL 22021.

Table 1-2 EPL 22021 monitoring requirements

EPL Condition	Requirement	Report Reference																																																																				
Premise maps																																																																						
A2.3	The most recently approved premises map(s) must be available for public viewing on the licensee's project website or a related website approved in writing by the EPA no more than 5 business days after the approval of the map(s) by the EPA. The requirements outlined in this condition only come into force when works or activities commence at the licensed premises.	Appendix A																																																																				
Water																																																																						
L2.1-L2.4 M2.2	Must not exceed limits for oil & grease (≤ 10), pH (6.5–8.5), TSS (≤ 50 mg/L), turbidity (≤ 40.95 NTU) at all monitoring points (1–19). For the purposes of the above water monitoring requirements 'Special Frequency 1' means: Sampling must be undertaken once within 24 hours following the commencement of a controlled discharge event, and then every second day throughout the discharge event when it is safe to do so.	Section 2.2 Not triggered																																																																				
P1.1	<p>Must monitor pollutant concentrations at all specified discharge/monitoring points. The following points referred to in the table are identified in this licence for the purpose of the monitoring and/or setting of limits for discharges of pollutants to water from the point.</p> <table border="1"> <thead> <tr> <th>EPA Identification Number</th> <th>Type of Monitoring Point</th> <th>Type of Discharge Point</th> <th>Location Description</th> </tr> </thead> <tbody> <tr><td>1</td><td>Surface Water Quality</td><td>Surface Water Quality</td><td>Discharge point SS-01</td></tr> <tr><td>2</td><td>Surface Water Quality</td><td>Surface Water Quality</td><td>Discharge point SS-02</td></tr> <tr><td>3</td><td>Surface Water Quality</td><td>Surface Water Quality</td><td>Discharge point SS-03</td></tr> <tr><td>4</td><td>Surface Water Quality</td><td>Surface Water Quality</td><td>Discharge point SS-04</td></tr> <tr><td>5</td><td>Surface Water Quality</td><td>Surface Water Quality</td><td>Discharge point SS-05</td></tr> <tr><td>6</td><td>Surface Water Quality</td><td>Surface Water Quality</td><td>Discharge point SS-06</td></tr> <tr><td>7</td><td>Surface Water Quality</td><td>Surface Water Quality</td><td>Discharge point SS-07</td></tr> <tr><td>8</td><td>Surface Water Quality</td><td>Surface Water Quality</td><td>Discharge point SB-01</td></tr> <tr><td>9</td><td>Surface Water Quality</td><td>Surface Water Quality</td><td>Discharge point SS-08</td></tr> <tr><td>10</td><td>Surface Water Quality</td><td>Surface Water Quality</td><td>Discharge point SS-09</td></tr> <tr><td>11</td><td>Surface Water Quality</td><td>Surface Water Quality</td><td>Discharge point SS-10</td></tr> <tr><td>12</td><td>Surface Water Quality</td><td>Surface Water Quality</td><td>Discharge point SS-11</td></tr> <tr><td>13</td><td>Surface Water Quality</td><td>Surface Water Quality</td><td>Discharge point WDP-1</td></tr> <tr><td>14</td><td>Surface Water Quality</td><td>Surface Water Quality</td><td>Discharge point WDP-2</td></tr> <tr><td>15</td><td>Surface Water Quality</td><td>Surface Water Quality</td><td>Discharge point WDP-3</td></tr> <tr><td>16</td><td>Surface Water Quality</td><td>Surface Water Quality</td><td>Discharge point WDP-4</td></tr> </tbody> </table>	EPA Identification Number	Type of Monitoring Point	Type of Discharge Point	Location Description	1	Surface Water Quality	Surface Water Quality	Discharge point SS-01	2	Surface Water Quality	Surface Water Quality	Discharge point SS-02	3	Surface Water Quality	Surface Water Quality	Discharge point SS-03	4	Surface Water Quality	Surface Water Quality	Discharge point SS-04	5	Surface Water Quality	Surface Water Quality	Discharge point SS-05	6	Surface Water Quality	Surface Water Quality	Discharge point SS-06	7	Surface Water Quality	Surface Water Quality	Discharge point SS-07	8	Surface Water Quality	Surface Water Quality	Discharge point SB-01	9	Surface Water Quality	Surface Water Quality	Discharge point SS-08	10	Surface Water Quality	Surface Water Quality	Discharge point SS-09	11	Surface Water Quality	Surface Water Quality	Discharge point SS-10	12	Surface Water Quality	Surface Water Quality	Discharge point SS-11	13	Surface Water Quality	Surface Water Quality	Discharge point WDP-1	14	Surface Water Quality	Surface Water Quality	Discharge point WDP-2	15	Surface Water Quality	Surface Water Quality	Discharge point WDP-3	16	Surface Water Quality	Surface Water Quality	Discharge point WDP-4	Appendix B
EPA Identification Number	Type of Monitoring Point	Type of Discharge Point	Location Description																																																																			
1	Surface Water Quality	Surface Water Quality	Discharge point SS-01																																																																			
2	Surface Water Quality	Surface Water Quality	Discharge point SS-02																																																																			
3	Surface Water Quality	Surface Water Quality	Discharge point SS-03																																																																			
4	Surface Water Quality	Surface Water Quality	Discharge point SS-04																																																																			
5	Surface Water Quality	Surface Water Quality	Discharge point SS-05																																																																			
6	Surface Water Quality	Surface Water Quality	Discharge point SS-06																																																																			
7	Surface Water Quality	Surface Water Quality	Discharge point SS-07																																																																			
8	Surface Water Quality	Surface Water Quality	Discharge point SB-01																																																																			
9	Surface Water Quality	Surface Water Quality	Discharge point SS-08																																																																			
10	Surface Water Quality	Surface Water Quality	Discharge point SS-09																																																																			
11	Surface Water Quality	Surface Water Quality	Discharge point SS-10																																																																			
12	Surface Water Quality	Surface Water Quality	Discharge point SS-11																																																																			
13	Surface Water Quality	Surface Water Quality	Discharge point WDP-1																																																																			
14	Surface Water Quality	Surface Water Quality	Discharge point WDP-2																																																																			
15	Surface Water Quality	Surface Water Quality	Discharge point WDP-3																																																																			
16	Surface Water Quality	Surface Water Quality	Discharge point WDP-4																																																																			



	17	Surface Water Quality	Surface Water Quality	Discharge point WDP-5	
	18	Surface Water Quality	Surface Water Quality	Discharge point WDP-6	
	19	Surface Water Quality	Surface Water Quality	Discharge point WDP-7	
	Note: SS -Farm dam or Sediment sump SB- Sediment basin WDP-Waterway				
Weather					
M5.1	The licensee must monitor and record temperature, humidity, wind direction, wind velocity and rainfall at either the project weather station, or through analysis of equivalent weather information obtained from the Australian Bureau of Meteorology. Monitoring must: <ul style="list-style-type: none"> a) be representative of each catchment; b) be undertaken prior to any works that may cause sediment to leave the premises; and c) continue to be operated until soil disturbance activities cease at the premises and the site has been stabilised. 				Section 2.1
Noise					
L6.7	Despite Condition L6.1, work may be undertaken during the hours of 6:00 am to 6:00 pm each day provided: <ul style="list-style-type: none"> a) no work affects any given receiver between the hours of 6:00 pm on a Saturday and 7:00 am on a Monday every second week; b) only low impact noise activities (defined in Condition L5.3) are permitted between 6.00 am and 7.00 am; and c) consultation with affected receivers occurs at least every three months, or more frequently following complaints recorded in the Complaints Register required by Condition M4.1, to determine respite or additional mitigation measures. 				Section 2.3
L4	Airblast Overpressure must not exceed: <ul style="list-style-type: none"> o 120 dB (lin peak) at any residence or sensitive receiver, at any time. o 115 dB (lin peak) at any receiver for more than 5% of blasts over the project. Blasting hours are restricted to: <ul style="list-style-type: none"> o 9:00 am – 5:00 pm Monday–Friday o 9:00 am – 1:00 pm Saturdays o No blasting on Sundays or public holidays o Exceptions require EPA written approval 				Section 2.4 Not triggered
Pollution complaints					
M6.1	The licensee must keep a legible record of all complaints made to the licensee or any employee or agent of the licensee in relation to pollution arising from any activity to which this licence applies.				Section 2.5
M6.2	The record must include details of the following: <ul style="list-style-type: none"> a) the date and time of the complaint; b) the method by which the complaint was made; c) any personal details of the complainant which were provided by the complainant or, if no such details were provided, a note to that effect; d) the nature of the complaint; e) the action taken by the licensee in relation to the complaint, including any follow-up contact with the complainant; and f) if no action was taken by the licensee, the reasons why no action was taken. 				Section 2.5

2 Monitoring

This section presents summaries of the monitoring completed in the reporting period from 1 May 2026 to 31 May 2026.

2.1 Weather

Local weather stations and site weather stations (rain gauges) were utilised for weather data across the Project, including:

- Stockinbingal weather station (Sunnydale), station number 073150,
- Junee Treatment Works weather station, station number 073019,
- Cootamundra Airport, station number 073142.

Parameters monitored included temperature, rainfall, relative humidity, wind speed and wind direction, in accordance with EPL Condition M5.1. A summary of daily weather observations for May 2026 is provided in Table 3-1 (Weather Monitoring Data – May 2026).

Table 2-1 Weather Monitoring Data – May 2026

Date	Temperature		Rainfall	Relative Humidity (%)	Wind direction	Wind Speed (km/h)
	Minimum (°C)	Maximum (°C)				
1	5.5	26.0	0	79	WNW	9
2	8.5	24.6	0	73	SSW	9
3	15.5	25.2	0	56	NNW	44
4	12.9	18.0	11	97	WSW	9
5	7.0	16.3	0.4	86	WSW	17
6	2.2	16.6	0	100	ESE	9
7	6.6	10.9	0	65	WSW	44
8	6.4	14.5	0	82	WNW	33
9	0.9	19.0	0	89	NNW	4
10	1.5	21.5	0	99	SSW	9
11	6.2	21.1	0	75	ESE	17
12	9.8	21.1	0	77	SSE	33

Revision No: 0

Issue Date: 18/06/2026

IRPL Document Number: 6-0019-220-PES-00-RP-0001

When printed this document is an uncontrolled version and must be checked against the Aconex electronic version for validity



13	7.0	20.6	0	74	SSE	7
14	11.1	20.6	0	72	SSE	33
15	11.7	21.6	0	77	SSE	17
16	9.9	21.6	0	78	SSW	17
17	5.1	19.2	0	91	SSW	9
18	9.9	16.2	2.5	93	ENE	9
19	13.8	16.1	18.5	93	SSW	17
20	7.3	15.0	1.5	84	WSW	33
21	1.5	16.6	0.5	99	SE	9
22	1.5	18.1	0	86	SSW	9
23	2.2	19.1	0	71	SSE	33
24	10.0	18.9	0	76	ESE	24
25	5.4	20.1	0	89	S	17
26	7.9	15.1	0	80	ESE	44
27	8.1	19.4	2	100	WSW	9
28	9.2	19.0	0	93	SSW	4
29	7.4	13.2	0	99	WNW	9
30	8.7	13.5	0	93	NNW	9
31	6.3	13.1	0	87	W	17



2.2 Water

Water quality monitoring in accordance with EPL 22021 was not triggered or required during the reporting period.

No controlled discharge or uncontrolled events (as defined under Condition M2.3) occurred within the reporting period.

The EPL variation that included surface water discharge points (P1) and associated water monitoring and limit conditions (L2, M2–M3) was issued on 15 June 2026. As a result, these requirements were not applicable for the May reporting period.

2.3 Noise

Noise monitoring is required to validate noise predictions for work undertaken outside of standard construction hours in accordance with the construction noise and vibration assessment and monitoring plan. All noise monitoring performed under EPL are included in Table 3-2.

Table 3-2 Noise Monitoring Data – May 2026

Date	Time	Monitoring Location	Attended / Continuous	Construction Activity	NML (dBA)	Predicted (dBA)	Recorded LAeq(15min) (dBA)	LAmx	LAmn	LA10	Exceedance of Predicted (dBA)	Comments
3 May	01:00	Olympic Highway, Illabo NSW	Attended	Excavation, load capping material	35	61	60.6	85.7	44.7	56.4	-0.4	Night work during possession; Windy conditions
3 May	01:25	Warrens Ln, Illabo NSW	Attended	Rail Possession works	35	53	40.6	65	35.6	42.5	-12.4	Night work during possession; Windy conditions
3 May	11:05	852 Ironbong Rd, Bethungra NSW	Attended	Bulk Earthworks	40	47	50.9	68.8	41.1	56	+3.9	Noise levels were dominated by very strong wind. No construction noise from earthworks was audible during the monitoring period. No exceedance of applicable NML attributable to project activities was identified
4 May	00:15	Wallgrove Rd, Illabo NSW	Attended	Bulk Earthworks	35	57	49.4	72.1	42.5	51.7	-7.6	Noise from moxy carting, excavator loading, intermittent impact (bin loading) and reversing alarms was observed. All noise was typical of construction activities and managed through

Revision No: 0

Issue Date: 18/06/2026

IRPL Document Number: 6-0019-220-PES-00-RP-0001

When printed this document is an uncontrolled version and must be checked against the Aconex electronic version for validity

Date	Time	Monitoring Location	Attended / Continuous	Construction Activity	NML (dBA)	Predicted (dBA)	Recorded LAeq(15min) (dBA)	LAmx	LAmn	LA10	Exceedance of Predicted (dBA)	Comments
												implementation of mitigation measures (plant maintenance, work practices, and community notification). No abnormal noise events were identified.
4 May	02:35	Bethungra NSW, Australia	Attended	Bulk Earthworks	35	55.1	45.2	53.2	42.9	45.9	-9.9	Dominant noise source was from traffic on Olympic Highway
5 May	00:15	Olympic Highway, Illabo NSW	Attended	Bulk Earthworks	35	58.4	56.2	82	40.7	54.6	-2.2	Dominant noise source was sheep bleating and traffic on Olympic Highway
5 May	00:26	Warrens Ln, Illabo NSW	Attended	Bulk Earthworks	35	52.3	34.4	66	21.8	34.4	-17.9	No construction noise from earthworks was audible during the monitoring period
10 May	14:27	386 Dudauman Rd, NSW	Attended	Steel fixing, tire wire, culvert works	40	36	35.6	67.7	30.2	35.2	-0.4	Only background noise audible
10 May	15:57	Bethungra NSW	Attended	Bulk Earthworks	40	54.4	51.8	72.1	26.1	52.2	-2.6	Moxy movement along haul road was the key construction noise audible, excavation works barely audible
17 May	09:38	Dirnaseer NSW	Attended	Rock Hammering and Soil movement works	40	68.2	55.6	70.5	39.8	59.3	-12.6	High wind affecting noise

Date	Time	Monitoring Location	Attended / Continuous	Construction Activity	NML (dBA)	Predicted (dBA)	Recorded LAeq(15min) (dBA)	LAm _{ax}	LAm _{in}	LA10	Exceedance of Predicted (dBA)	Comments
17 May	13:00	109 Yourella Ln NSW	Attended	Open drain excavation works	40	40.2	35.4	56.6	26.4	38.1	-4.8	Only background noise audible
17 May	09:10	1673 Dirnaseer Rd NSW	Attended	Bulk Earthworks	40	40	38	54.5	32.7	39.6	-2.0	Only background noise audible
17 May	10:15	Old Cootamundra Rd, Dirnaseer NSW	Attended	Bulk Earthworks	40	40	49.8	68.1	33.8	52.6	+9.8	Roller movements were observed generating typical operational noise. Activities were localised and managed with standard mitigation measures and community notifications in place.
17 May	09:12	1673 Dirnaseer Rd	Attended	Bulk Earthworks	40	40	41.6	65.1	33.7	42.7	+1.6	Distant rock breaker heard in Section 4.
17 May	10:51	Bethungra NSW	Attended	Bulk Earthworks	40	31.2	51.6	80.7	28.7	40.1	+20.4	A lot of background noise audible. No construction noise audible throughout monitoring event.
17 May	11:32	Bethungra NSW	Attended	Bulk Earthworks	40	42.3	47	69.1	32	48.8	+5.3	Exceedances attributable to non-worksite related noises included birds, sheep, and residential noise.

Revision No: 0

Issue Date: 18/06/2026

IRPL Document Number: 6-0019-220-PES-00-RP-0001

When printed this document is an uncontrolled version and must be checked against the Aconex electronic version for validity

Date	Time	Monitoring Location	Attended / Continuous	Construction Activity	NML (dBA)	Predicted (dBA)	Recorded LAeq(15min) (dBA)	LAmx	LAmn	LA10	Exceedance of Predicted (dBA)	Comments
17 May	12:15	Bethungra NSW	Attended	Bulk Earthworks	40	46.3	43.5	58.1	33.6	47.2	-2.8	Only background noise audible
17 May	14:21	Bethungra NSW	Attended	Bulk Earthworks	40	35.2	33.4	54.1	23	35.3	-1.8	None
21 May	14:53	Bethungra NSW	Attended	Highly noise intensive Earthworks	45	45.4	37.3	68	25.5	37.3	-8.1	No rock breaking/hammering audible throughout the monitoring event.
24 May	08:31	1673 Dirnaseer Rd NSW	Attended	Bulk Earthworks	40	51.9	45.2	62.9	37.9	47.1	-6.7	Only background noise audible
24 May	10:50	128 Dudauman Rd NSW	Attended	Earthworks, Structures	40	43.5	51.2	75.5	26.6	48.6	+7.7	Noise was inaudible at the monitoring location, with ambient noise dominated by wind and local traffic
24 May	14:44	960 Ironbong Rd NSW	Attended	Bulk Earthworks	40	41	39	64	26	41	-2.0	Only background noise audible
24 May	15:09	852 Ironbong Rd NSW	Attended	Bulk Earthworks	40	44	37	61	24	36	-7.0	Only background noise audible
24 May	11:30	Dirnaseer Rd NSW	Attended	Drainages	40	40	38.4	58.4	28.1	41.1	-1.6	Noise environment was characterised by low rural background levels, with intermittent increases attributed to local agricultural

Revision No: 0

Issue Date: 18/06/2026

IRPL Document Number: 6-0019-220-PES-00-RP-0001

When printed this document is an uncontrolled version and must be checked against the Aconex electronic version for validity

Date	Time	Monitoring Location	Attended / Continuous	Construction Activity	NML (dBA)	Predicted (dBA)	Recorded LAeq(15min) (dBA)	LAmx	LAmn	LA10	Exceedance of Predicted (dBA)	Comments
												activity and passing vehicles. Construction noise was not identified as a dominant source.
24 May	15:30	Illabo NSW	Attended	Bulk Earthworks	40	46.8	54	72.2	25	53.5	+54.6	Only background noise audible (traffic on Olympic Hwy)
24 May	15:45	Illabo NSW	Attended	Bulk Earthworks	40	43.4	69.2	91.1	27.3	71.8	+25.8	Dominant noise source was traffic on Olympic Highway and trains
31 May	09:29	1673 Dirnaseer Rd	Attended	Bridge Piling	40	34	45.6	67.5	28.4	42.2	+11.6	Construction works inaudible. High bird activity in vicinity which caused majority of noise monitored, occasional vehicle passing on public road



2.4 Noise – Blasting

Blasting activities were not undertaken during the reporting period, as blasting is scheduled to commence at the end of June 2026. Accordingly, EPL blasting conditions were not triggered.



2.5 Pollution Complaints

No pollution complaints were received during the reporting period (May 2026). The complaints register indicates that zero complaints were recorded across all weeks within the month. Accordingly, no investigations, responses, or corrective actions were required. The project complaints management system, including the community complaints line and notification procedures, remained in place and operational in accordance with EPL Conditions M6 and M7.

I2S Complaints Register																	
No.	Date received	Time received/initiated	Method received	Complaint Number	CM Unique Identifier	Avoidable/unavoidable	Chainage/suburb	Complaint/Enquiry/Fee feedback	Nature of Complaint	Number of people affected in relation to a	Details of Complaint	Initial Response to Complaint (if no action taken, reason [s] why)	Further action taken (if required) after the initial response and resolution	Means by which the complaint was addressed (e.g. email, call, meeting)	Procedure/timeframe	Mediation required (Y/N)	Status of Complaint
Week concluding 8 May 2026 - 0 complaints received																	
Week concluding 15 May 2026 - 0 complaints received																	
Week concluding 22 May 2026 - 0 complaints received																	
Week concluding 29 May 2026 - 0 complaints received																	
Week concluding 5 June 2026 - 2 complaints received																	

Figure 3-1 Extract from Complaint Register (5-0019-220-PCS-00-RG-0001_72)



Appendix A Premise Maps – May



Legend

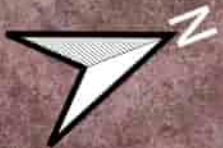
- Road Names
- Other Boundaries
- Chainages
- ARTC Kilometrage
- Cadastre
- Chainage (Project, m)
- Premise Boundary



PREMISE BOUNDARY MAPS

Date: 19/01/2026
 Author: Tess Anastakis
 Approver: Trent Doyle
 Data Sources: IRPL, JH

Paper: A3
 Rev: A



Legend

- Road Names
- Other Boundaries
- Chainages
- ARTC Kilometerage
- Cadastre
- Chainage (Project, m)
- Premise Boundary



PREMISE BOUNDARY MAPS

Date: 19/01/2026
 Author: Tess Anastakis
 Approver: Trent Doyle
 Data Sources: IRPL, JH

Paper: A3
 Rev: A



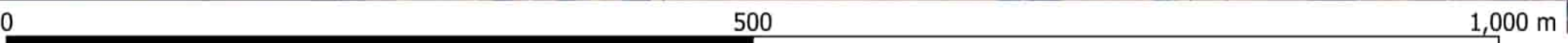
- Legend
- Road Names
 - Other Boundaries
 - Chainages
 - ARTC Kilometerage
 - Cadastre
 - Chainage (Project, m)
 - Premise Boundary



PREMISE BOUNDARY MAPS

Date: 19/01/2026
 Author: Tess Anastakis
 Approver: Trent Doyle
 Data Sources: IRPL, JH

Paper: A3
 Rev: A



Legend

- Road Names
- Other Boundaries
- Chainages
- ARTC Kilometerage
- Cadastral
- Chainage (Project, m)
- Premise Boundary



PREMISE BOUNDARY MAPS

Date: 19/01/2026
Author: Tess Anastakis
Approver: Trent Doyle
Data Sources: IRPL, JH

Paper: A3
Rev: A



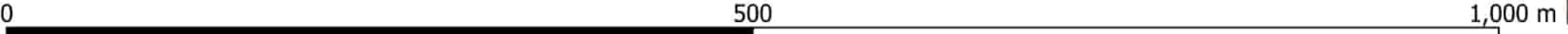
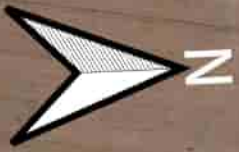
- Legend
- Other Boundaries
 - Cadastre
 - Chainages
 - Premise Boundary
 - ARTC Kilometrage
 - Chainage (Project, m)



PREMISE BOUNDARY MAPS

Date: 19/01/2026
 Author: Tess Anastakis
 Approver: Trent Doyle
 Data Sources: IRPL, JH

Paper: A3
 Rev: A



Legend

- Road Names
- Other Boundaries
- Chainages
- ARTC Kilometerage
- Cadastre
- Chainage (Project, m)
- ▭ Premise Boundary



PREMISE BOUNDARY MAPS

Date: 19/01/2026
 Author: Tess Anastakis
 Approver: Trent Doyle
 Data Sources: IRPL, JH

Paper: A3
 Rev: A





- Legend
- Road Names
 - Other Boundaries
 - Cadastre
 - Premise Boundary



PREMISE BOUNDARY MAPS

Date: 19/01/2026
 Author: Tess Anastakis
 Approver: Trent Doyle
 Data Sources: IRPL, JH

Paper: A3
 Rev: A



- Legend
- Road Names
 - Other Boundaries
 - Chainages
 - ARTC Kilometerage
 - Cadastre
 - Chainage (Project, m)
 - Premise Boundary



PREMISE BOUNDARY MAPS

Date: 19/01/2026
 Author: Tess Anastakis
 Approver: Trent Doyle
 Data Sources: IRPL, JH

Paper: A3
 Rev: A



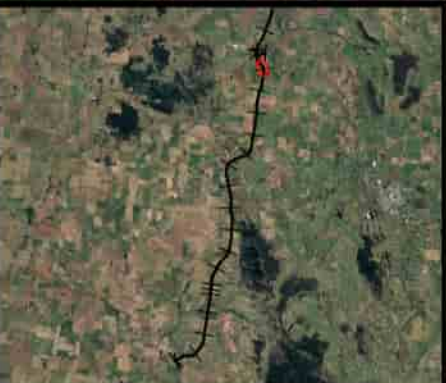
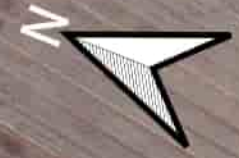
- Legend
- Road Names
 - Other Boundaries
 - Chainages
 - Cadastre
 - Premise Boundary
 - Chainage (Project, m)



PREMISE BOUNDARY MAPS

Date: 19/01/2026
 Author: Tess Anastakis
 Approver: Trent Doyle
 Data Sources: IRPL, JH

Paper: A3
 Rev: A



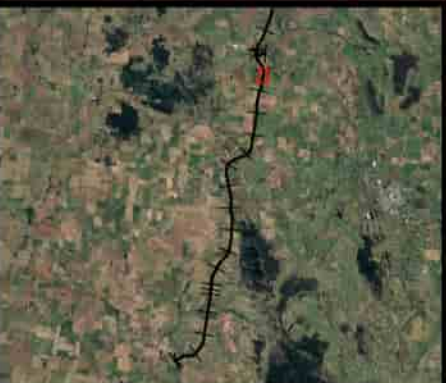
- Legend
- Road Names
 - Other Boundaries
 - Chainages
 - Cadastral
 - Premise Boundary
 - Chainage (Project, m)



PREMISE BOUNDARY MAPS

Date: 19/01/2026
 Author: Tess Anastakis
 Approver: Trent Doyle
 Data Sources: IRPL, JH

Paper: A3
 Rev: A



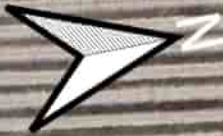
- Legend
- Road Names
 - Other Boundaries
 - Chainages
 - Cadastre
 - Premise Boundary
 - Chainage (Project, m)



PREMISE BOUNDARY MAPS

Date: 19/01/2026
 Author: Tess Anastakis
 Approver: Trent Doyle
 Data Sources: IRPL, JH

Paper: A3
 Rev: A



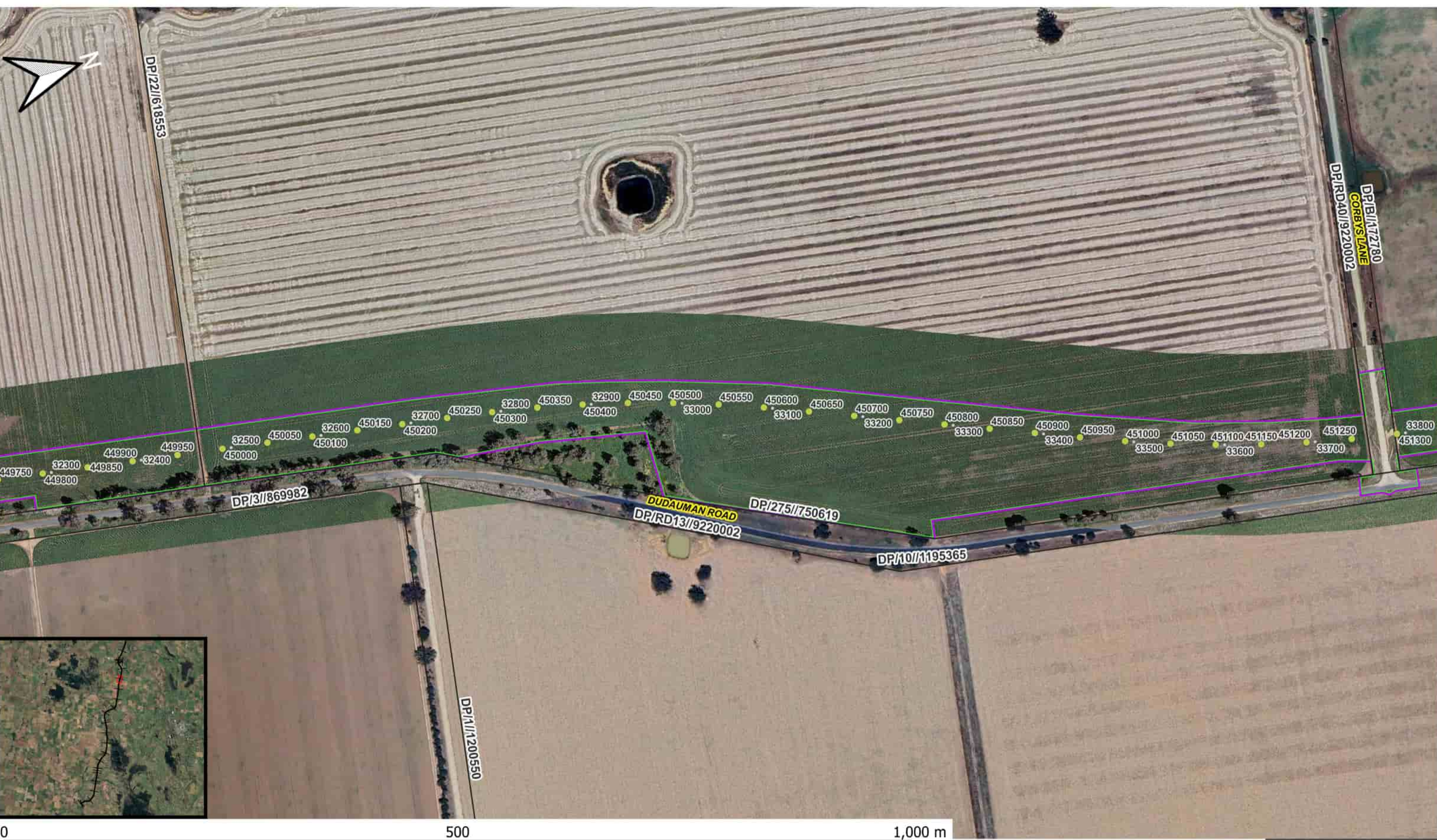
- Legend
- Road Names
 - Other Boundaries
 - Chainages
 - Cadastre
 - Chainage (Project, m)
 - Premise Boundary



PREMISE BOUNDARY MAPS

Date: 19/01/2026
Author: Tess Anastakis
Approver: Trent Doyle
Data Sources: IRPL, JH

Paper: A3
Rev: A



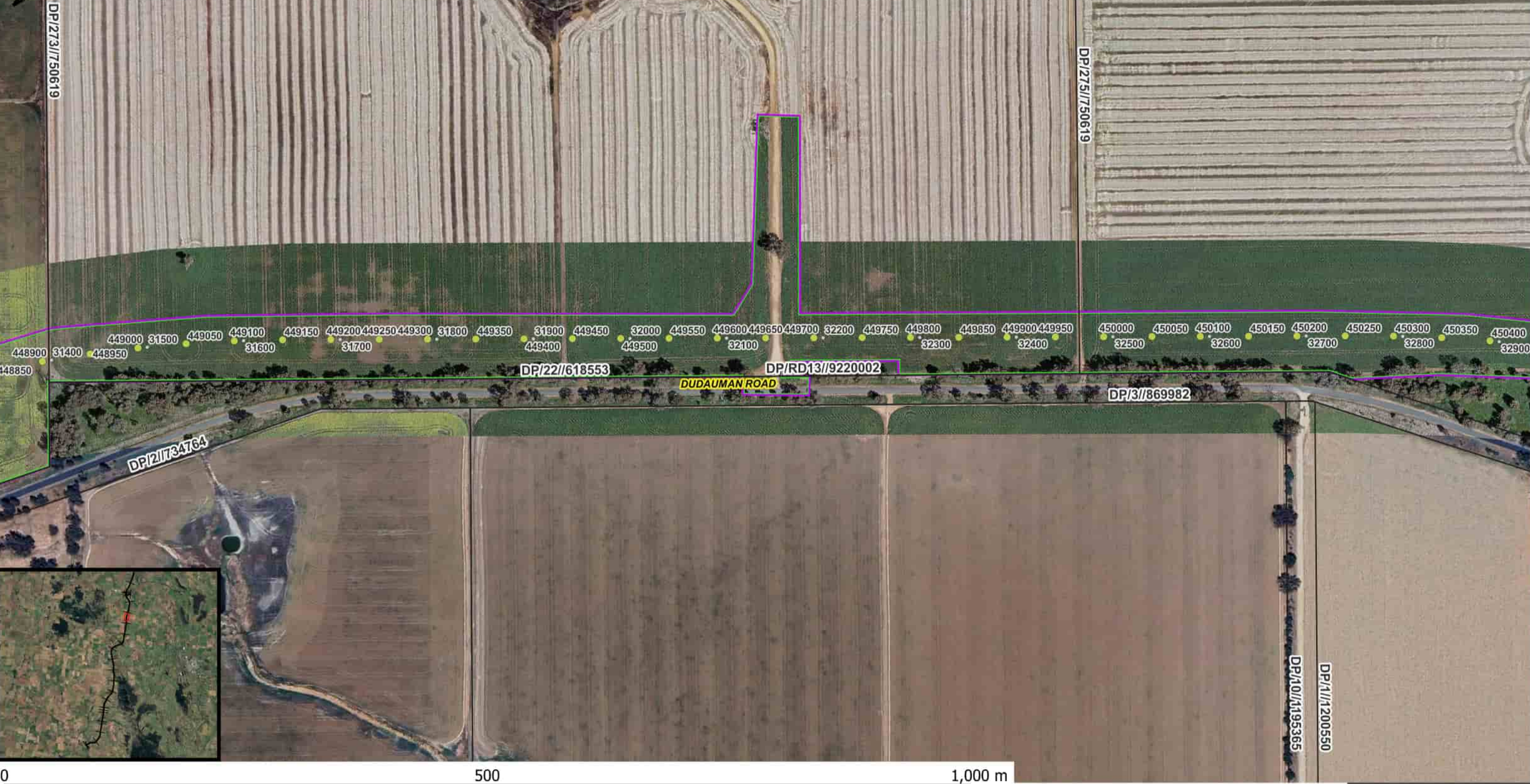
- Legend
- Road Names
 - Other Boundaries
 - Chainages
 - Cadastre
 - Premise Boundary
 - Chainage (Project, m)



PREMISE BOUNDARY MAPS

Date: 19/01/2026
 Author: Tess Anastakis
 Approver: Trent Doyle
 Data Sources: IRPL, JH

Paper: A3
 Rev: A



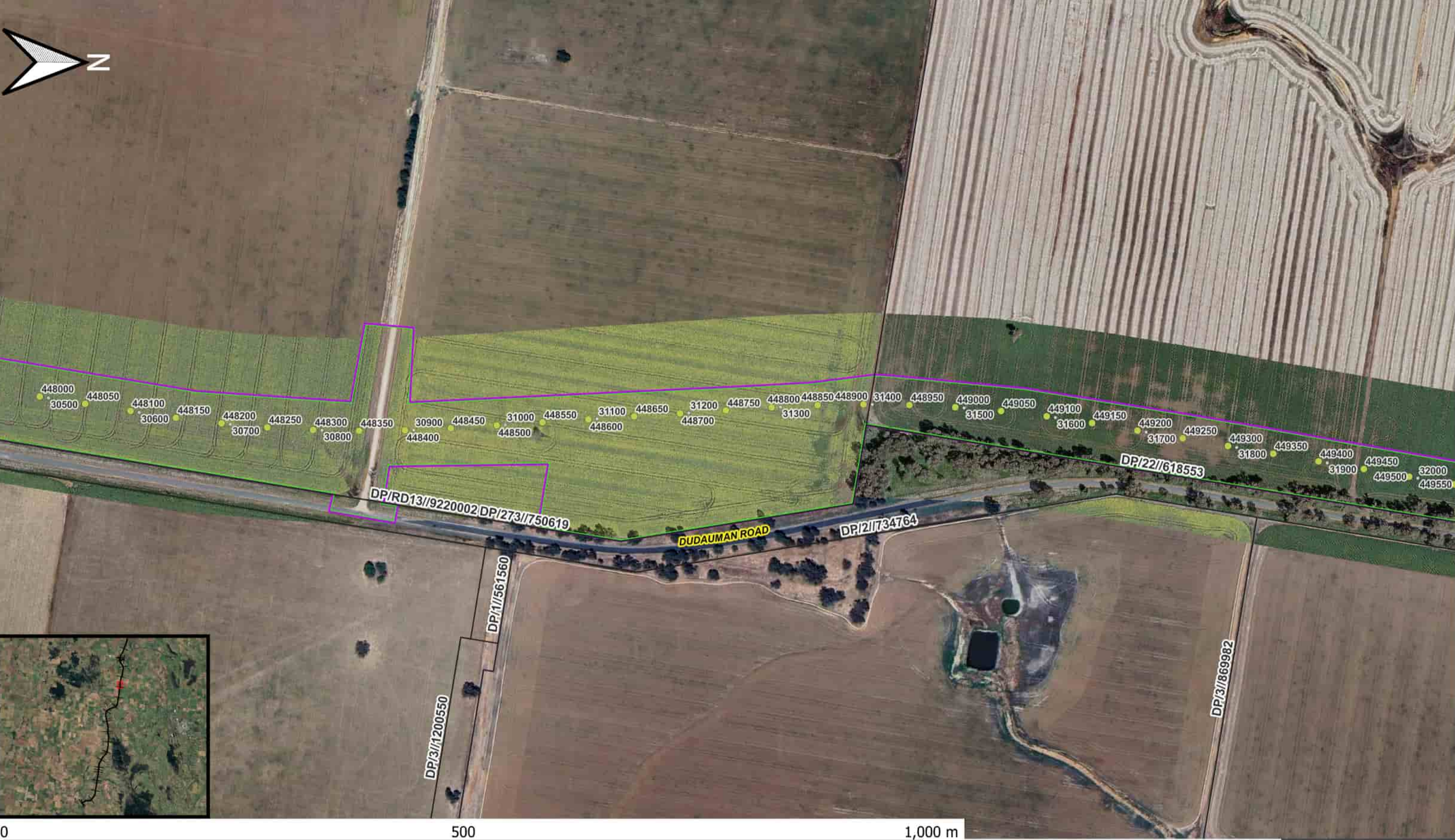
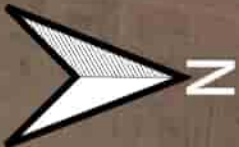
- Legend
- Road Names
 - Other Boundaries
 - Chainages
 - Cadastre
 - Premise Boundary
 - Chainage (Project, m)



PREMISE BOUNDARY MAPS

Date: 19/01/2026
 Author: Tess Anastakis
 Approver: Trent Doyle
 Data Sources: IRPL, JH

Paper: A3
 Rev: A



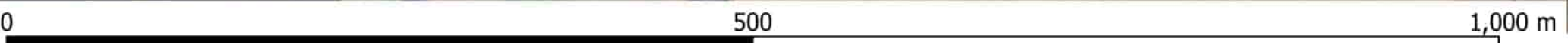
- Legend
- Road Names
 - Other Boundaries
 - Chainages
 - Cadastre
 - Premise Boundary
 - Chainage (Project, m)



PREMISE BOUNDARY MAPS

Date: 19/01/2026
 Author: Tess Anastakis
 Approver: Trent Doyle
 Data Sources: IRPL, JH

Paper: A3
 Rev: A



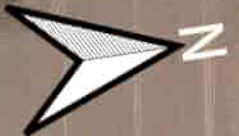
- Legend
- Road Names
 - Other Boundaries
 - Chainages
 - Cadastre
 - Chainage (Project, m)
 - Premise Boundary



PREMISE BOUNDARY MAPS

Date: 19/01/2026
 Author: Tess Anastakis
 Approver: Trent Doyle
 Data Sources: IRPL, JH

Paper: A3
 Rev: A



DP/273/750619

DP/803//1298311

DP/804//1298311

446200 28700 446250 446300 446350 446400 446450 446500 446550 446600 446650 446700 446750 29300 446850 446900 446950 447000 447050 447100 29600 447150 447200 447250 447300 447350 447400 447450 30000 447550 447600 447650 447700 447750
28800 28900 29000 29100 29200 446800 29400 29500 29700 29800 29900 447500 30100 30200

DP/801//1298311

DP/RD13//9220002
DUDAUMAN ROAD

DP/802//1298311

DP/2//561560

DP/124//750598 DP/1//377393

DP/141//750598

DP/1//561560



0 500 1,000 m

Legend

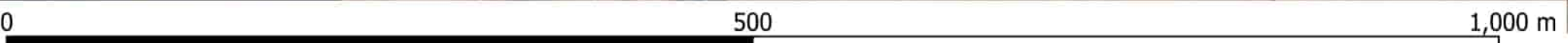
- Road Names
- Other Boundaries
- Chainages
- Cadastre
- Premise Boundary
- Chainage (Project, m)



PREMISE BOUNDARY MAPS

Date: 19/01/2026
Author: Tess Anastakis
Approver: Trent Doyle
Data Sources: IRPL, JH

Paper: A3
Rev: A



- Legend
- Road Names
 - Other Boundaries
 - Chainages
 - Cadastre
 - Premise Boundary
 - Chainage (Project, m)



PREMISE BOUNDARY MAPS

Date: 19/01/2026
 Author: Tess Anastakis
 Approver: Trent Doyle
 Data Sources: IRPL, JH

Paper: A3
 Rev: A



- Legend
- Road Names
 - Other Boundaries
 - Chainages
 - Cadastre
 - Premise Boundary
 - Chainage (Project, m)



PREMISE BOUNDARY MAPS

Date: 19/01/2026
 Author: Tess Anastakis
 Approver: Trent Doyle
 Data Sources: IRPL, JH

Paper: A3
 Rev: A



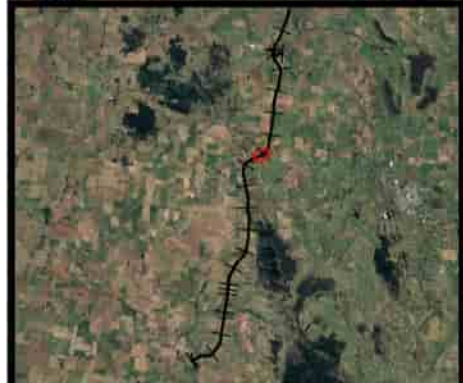
- Legend
- Other Boundaries
 - ▭ Cadastre
 - ▭ Premise Boundary
 - Chainages
 - Chainage (Project, m)



PREMISE BOUNDARY MAPS

Date: 19/01/2026
 Author: Tess Anastakis
 Approver: Trent Doyle
 Data Sources: IRPL, JH

Paper: A3
 Rev: A



- Legend
- Other Boundaries
 - Chainages
 - ▭ Cadastre
 - Chainage (Project, m)
 - ▭ Premise Boundary



PREMISE BOUNDARY MAPS

Date: 19/01/2026
 Author: Tess Anastakis
 Approver: Trent Doyle
 Data Sources: IRPL, JH

Paper: A3
 Rev: A



- Legend
- Other Boundaries
 - Cadastre
 - Premise Boundary
 - Chainage (Project, m)



PREMISE BOUNDARY MAPS

Date: 19/01/2026
 Author: Tess Anastakis
 Approver: Trent Doyle
 Data Sources: IRPL, JH

Paper: A3
 Rev: A



- Legend
- Other Boundaries
 - Cadastre
 - Chainages
 - Chainage (Project, m)
 - Premise Boundary



PREMISE BOUNDARY MAPS

Date: 19/01/2026
 Author: Tess Anastakis
 Approver: Trent Doyle
 Data Sources: IRPL, JH

Paper: A3
 Rev: A



DP/201/751401

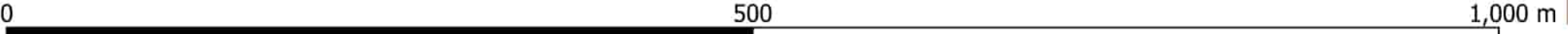
DP/1/631000 DP/1/1173278

DP/198/751401

DP/4/134014

DP/32/751401

DP/RD51/9220003



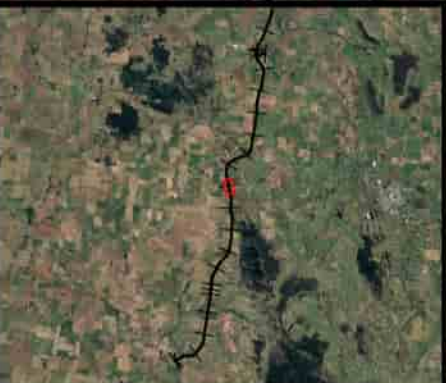
- Legend
- Other Boundaries
 - Cadastre
 - Chainages
 - Chainage (Project, m)
 - Premise Boundary



PREMISE BOUNDARY MAPS

Date: 19/01/2026
 Author: Tess Anastakis
 Approver: Trent Doyle
 Data Sources: IRPL, JH

Paper: A3
 Rev: A



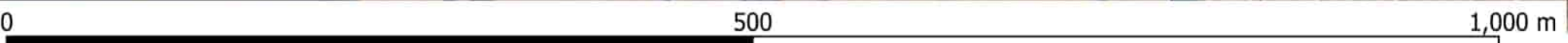
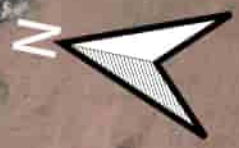
- Legend
- Road Names
 - Other Boundaries
 - Chainages
 - Cadastre
 - Premise Boundary
 - Chainage (Project, m)



PREMISE BOUNDARY MAPS

Date: 19/01/2026
 Author: Tess Anastakis
 Approver: Trent Doyle
 Data Sources: IRPL, JH

Paper: A3
 Rev: A



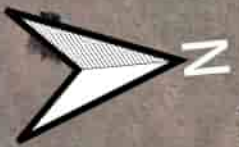
- Legend
- Other Boundaries
 - Cadastre
 - Chainages
 - Chainage (Project, m)
 - Premise Boundary



PREMISE BOUNDARY MAPS

Date: 19/01/2026
 Author: Tess Anastakis
 Approver: Trent Doyle
 Data Sources: IRPL, JH

Paper: A3
 Rev: A



- Legend
- Other Boundaries
 - Cadastre
 - Chainages
 - Chainage (Project, m)
 - Premise Boundary



PREMISE BOUNDARY MAPS

Date: 19/01/2026
 Author: Tess Anastakis
 Approver: Trent Doyle
 Data Sources: IRPL, JH

Paper: A3
 Rev: A



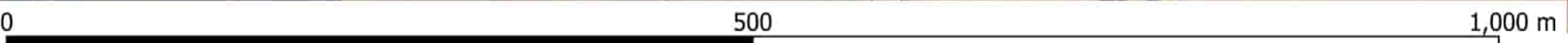
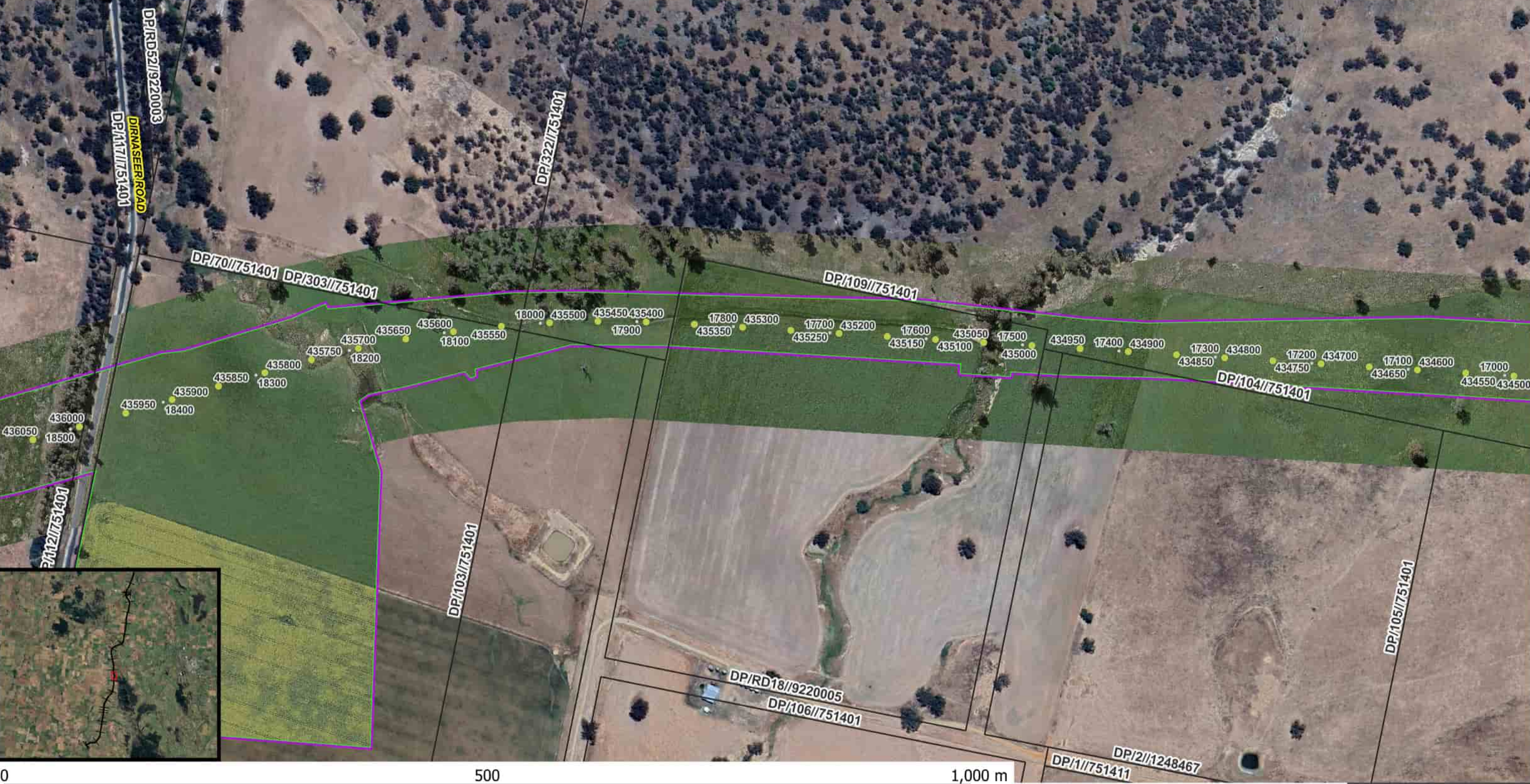
- Legend
- Road Names
 - Other Boundaries
 - Chainages
 - Cadastral
 - Chainage (Project, m)
 - Premise Boundary



PREMISE BOUNDARY MAPS

Date: 19/01/2026
 Author: Tess Anastakis
 Approver: Trent Doyle
 Data Sources: IRPL, JH

Paper: A3
 Rev: A



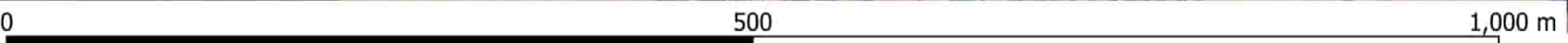
- Legend
- Road Names
 - Other Boundaries
 - Chainages
 - Cadastre
 - Premise Boundary
 - Chainage (Project, m)



PREMISE BOUNDARY MAPS

Date: 19/01/2026
 Author: Tess Anastakis
 Approver: Trent Doyle
 Data Sources: IRPL, JH

Paper: A3
 Rev: A



- Legend
- Other Boundaries
 - Cadastre
 - Chainages
 - Chainage (Project, m)
 - Premise Boundary



PREMISE BOUNDARY MAPS

Date: 19/01/2026
 Author: Tess Anastakis
 Approver: Trent Doyle
 Data Sources: IRPL, JH

Paper: A3
 Rev: A



- Legend
- Other Boundaries
 - Cadastre
 - Chainage (Project, m)
 - Premise Boundary



PREMISE BOUNDARY MAPS

Date: 19/01/2026
 Author: Tess Anastakis
 Approver: Trent Doyle
 Data Sources: IRPL, JH

Paper: A3
 Rev: A



- Legend
- Other Boundaries
 - Cadastre
 - Premise Boundary
 - Chainage (Project, m)



PREMISE BOUNDARY MAPS

Date: 19/01/2026
 Author: Tess Anastakis
 Approver: Trent Doyle
 Data Sources: IRPL, JH

Paper: A3
 Rev: A



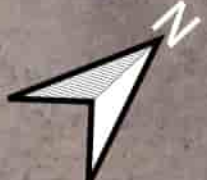
- Legend
- Other Boundaries
 - Cadastre
 - Premise Boundary
 - Chainage (Project, m)



PREMISE BOUNDARY MAPS

Date: 19/01/2026
 Author: Tess Anastakis
 Approver: Trent Doyle
 Data Sources: IRPL, JH

Paper: A3
 Rev: A



- Legend
- Other Boundaries
 - Cadastre
 - Chainages
 - Chainage (Project, m)
 - Premise Boundary



PREMISE BOUNDARY MAPS

Date: 19/01/2026
 Author: Tess Anastakis
 Approver: Trent Doyle
 Data Sources: IRPL, JH

Paper: A3
 Rev: A



- Legend
- Other Boundaries
 - Cadastre
 - Premise Boundary
 - Chainages
 - Chainage (Project, m)



PREMISE BOUNDARY MAPS

Date: 19/01/2026
 Author: Tess Anastakis
 Approver: Trent Doyle
 Data Sources: IRPL, JH

Paper: A3
 Rev: A



- Legend
- Road Names
 - Other Boundaries
 - Chainages
 - Cadastre
 - Premise Boundary
 - Chainage (Project, m)



PREMISE BOUNDARY MAPS

Date: 19/01/2026
 Author: Tess Anastakis
 Approver: Trent Doyle
 Data Sources: IRPL, JH

Paper: A3
 Rev: A



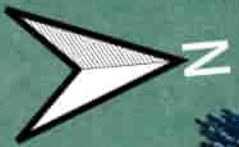
- Legend
- Road Names
 - Other Boundaries
 - Chainages
 - Cadastral
 - Chainage (Project, m)
 - Premise Boundary



PREMISE BOUNDARY MAPS

Date: 19/01/2026
 Author: Tess Anastakis
 Approver: Trent Doyle
 Data Sources: IRPL, JH

Paper: A3
 Rev: A



IRONBONG ROAD

DP/2//610833

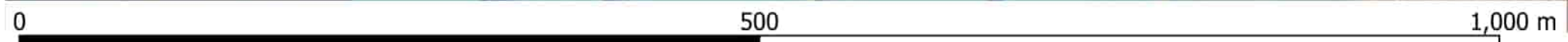
DP/RD53//9220003

DP/541/751396

DP/20//1116265

DP/EE01//1116265

426450 426500 426550 9100 426650 426700 426750 426800 426900 9400 426850 426950 9500 427000 427050 427100 427150 9700 427250 427300 427350 427400 427450 427500 10000 427550 427600 427650 427700 10200 427750 427800 427850 10300 427900 427950 428000 10400 10500



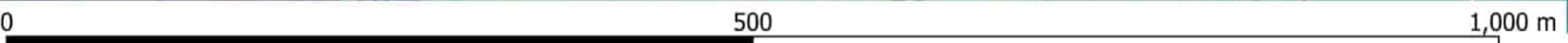
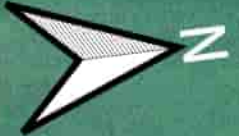
- Legend
- Road Names
 - Other Boundaries
 - Chainages
 - Cadastre
 - Premise Boundary
 - Chainage (Project, m)



PREMISE BOUNDARY MAPS

Date: 19/01/2026
 Author: Tess Anastakis
 Approver: Trent Doyle
 Data Sources: IRPL, JH

Paper: A3
 Rev: A



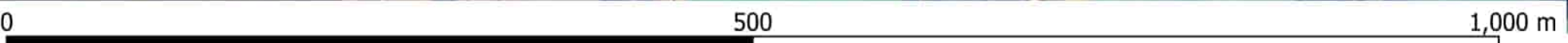
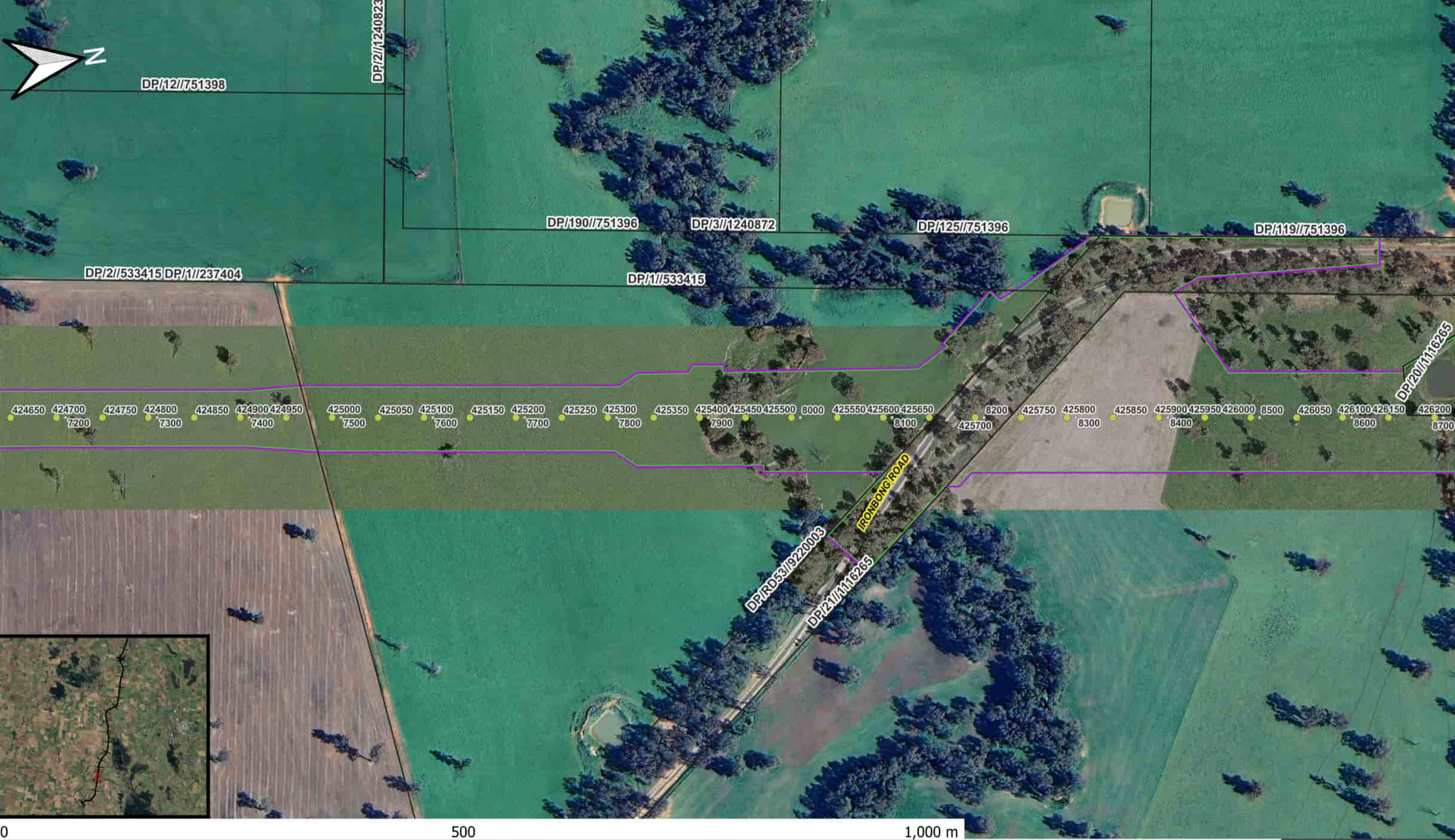
- Legend
- Road Names
 - Other Boundaries
 - Chainages
 - Cadastre
 Chainage (Project, m)
 - Premise Boundary






PREMISE BOUNDARY MAPS

Date: 19/01/2026
 Author: Tess Anastakis
 Approver: Trent Doyle
 Data Sources: IRPL, JH

Paper: A3
 Rev: A



- Legend
- Road Names
 - Other Boundaries
 - Chainages
 -  Cadastre
  Chainage (Project, m)
 -  Premise Boundary



PREMISE BOUNDARY MAPS

Date: 19/01/2026
 Author: Tess Anastakis
 Approver: Trent Doyle
 Data Sources: IRPL, JH

Paper: A3
 Rev: A



DP/12//751398 DP/1//237404

DP/2//1240823

DP/190//751396

DP/3//237404

DP/3//1240872

423750 423800 423850 423900 423950 424000 424050 424100 424150 424200 424250 424300 424350 424400 424450 424500 424550 424600 7100 424650 424700 424750 424800 424850 424900 424950 425000 425050 425100 425150 425200 425250 425300
6300 6400 6500 6600 6700 6800 6900 7000 7200 7300 7400 7500 7600 7700 7800

DP/2//533415

DP/1//533415

DP/IRD53//9220003



0 500 1,000 m

Legend

- Road Names
- Other Boundaries
- Chainages
- Cadastral
- Premise Boundary
- Chainage (Project, m)



PREMISE BOUNDARY MAPS

Date: 19/01/2026
Author: Tess Anastakis
Approver: Trent Doyle
Data Sources: IRPL, JH

Paper: A3
Rev: A



- Legend
- Road Names
 - Other Boundaries
 - Chainages
 - Cadastre
 - Premise Boundary
 - Chainage (Project, m)



PREMISE BOUNDARY MAPS

Date: 19/01/2026
 Author: Tess Anastakis
 Approver: Trent Doyle
 Data Sources: IRPL, JH

Paper: A3
 Rev: A



DP/30//751398
DP/RD24//9220005

DP/126//751398

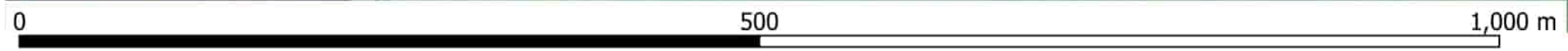
DP/RD56//9220003

421950 422000 422050 422100 422150 422200 422250 422300 422350 422400 422450 422500 422550 422600 5100 422650 422700 422750 422800 422850 422900 5400 422950 423000 423050 423100 423150 423200 423250 423300 423350 423400 423450 6000
4500 4600 4700 4800 4900 5000 5200 5300 5500 5600 5700 5800 5900 423500

DP/49//751398

DP/RD31//404
OLD SYDNEY ROAD

DP/94//751398 DP/2//622895



Legend

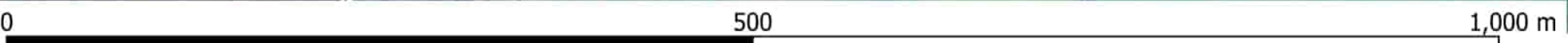
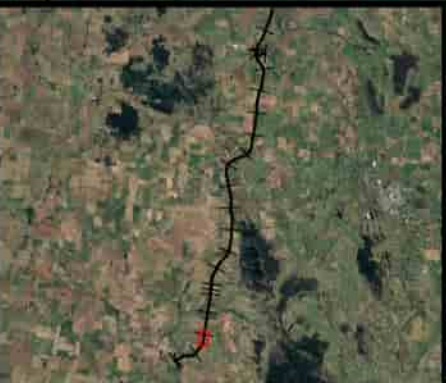
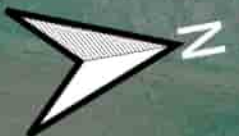
- Road Names
- Other Boundaries
- Chainages
- Cadastral
- Premise Boundary
- Chainage (Project, m)



PREMISE BOUNDARY MAPS

Date: 19/01/2026
 Author: Tess Anastakis
 Approver: Trent Doyle
 Data Sources: IRPL, JH

Paper: A3
 Rev: A



Legend

- Road Names
- Other Boundaries
- Chainages
- ARTC Kilometerage
- Cadastre
- Chainage (Project, m)
- ▭ Premise Boundary



PREMISE BOUNDARY MAPS

Date: 19/01/2026
 Author: Tess Anastakis
 Approver: Trent Doyle
 Data Sources: IRPL, JH

Paper: A3
 Rev: A



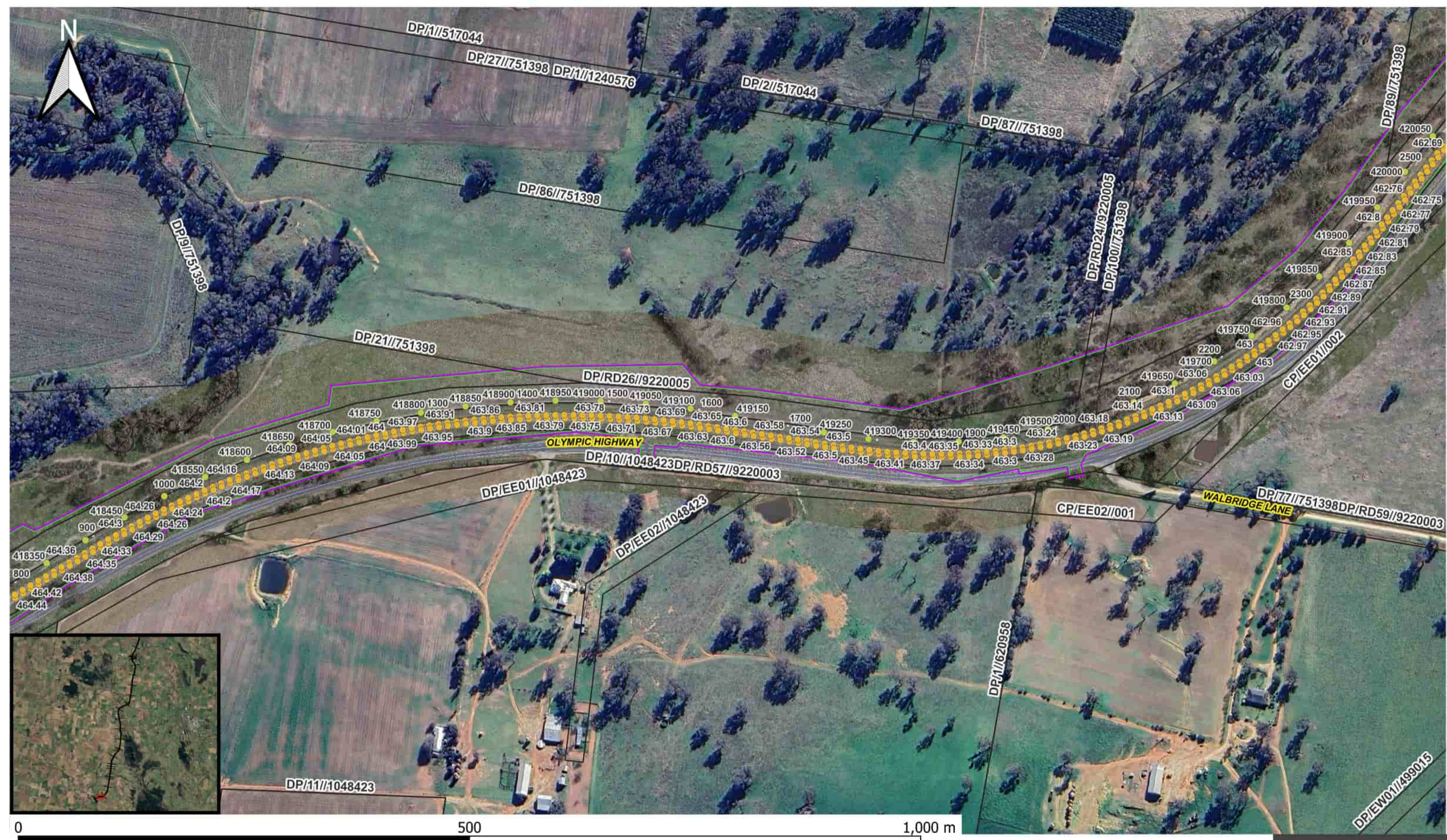
- Legend
- Road Names
 - Other Boundaries
 - Chainages
 - ARTC Kilometrage
 - ▭ Cadastre
 - Chainage (Project, m)
 - ▭ Premise Boundary



PREMISE BOUNDARY MAPS

Date: 19/01/2026
 Author: Tess Anastakis
 Approver: Trent Doyle
 Data Sources: IRPL, JH

Paper: A3
 Rev: A



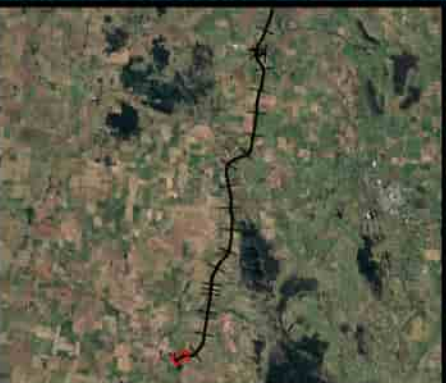
- Legend
- Road Names
 - Other Boundaries
 - Chainages
 - ARTC Kilometrage
 - ▭ Cadastre
 - Chainage (Project, m)
 - ▭ Premise Boundary



PREMISE BOUNDARY MAPS

Date: 19/01/2026
 Author: Tess Anastakis
 Approver: Trent Doyle
 Data Sources: IRPL, JH

Paper: A3
 Rev: A



- Legend
- Road Names
 - Other Boundaries
 - Chainages
 - ARTC Kilometrage
 - Cadastral
 - Chainage (Project, m)
 - Premise Boundary



PREMISE BOUNDARY MAPS

Date: 19/01/2026
 Author: Tess Anastakis
 Approver: Trent Doyle
 Data Sources: IRPL, JH

Paper: A3
 Rev: A



- Legend
- Road Names
 - Other Boundaries
 - Chainages
 - ARTC Kilometrage
 - Cadastre
 - Chainage (Project, m)
 - ▭ Premise Boundary



PREMISE BOUNDARY MAPS

Date: 19/01/2026
 Author: Tess Anastakis
 Approver: Trent Doyle
 Data Sources: IRPL, JH

Paper: A3
 Rev: A



- Legend
- Road Names
 - Other Boundaries
 - Chainages
 - Cadastral
 - Premise Boundary
 - ARTC Kilometrage



PREMISE BOUNDARY MAPS

Date: 19/01/2026
 Author: Tess Anastakis
 Approver: Trent Doyle
 Data Sources: IRPL, JH

Paper: A3
 Rev: A



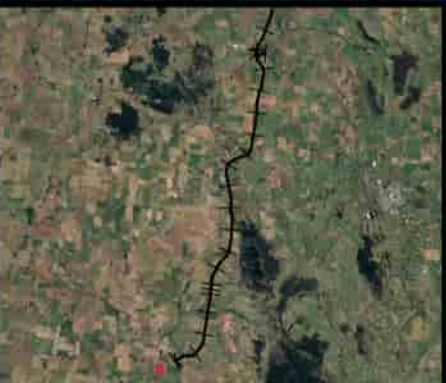
- Legend
- Road Names
 - Other Boundaries
 - Chainages
 - Cadastral
 - Premise Boundary
 - ARTC Kilometrage



PREMISE BOUNDARY MAPS

Date: 19/01/2026
 Author: Tess Anastakis
 Approver: Trent Doyle
 Data Sources: IRPL, JH

Paper: A3
 Rev: A



- Legend
- Road Names
 - Other Boundaries
 - Chainages
 - Cadastral
 - Premise Boundary
 - ARTC Kilometerage



PREMISE BOUNDARY MAPS

Date: 19/01/2026
 Author: Tess Anastakis
 Approver: Trent Doyle
 Data Sources: IRPL, JH

Paper: A3
 Rev: A



- Legend
- Road Names
 - Other Boundaries
 - Chainages
 - Cadastral
 - Premise Boundary
 - ARTC Kilometrage



PREMISE BOUNDARY MAPS

Date: 19/01/2026
 Author: Tess Anastakis
 Approver: Trent Doyle
 Data Sources: IRPL, JH

Paper: A3
 Rev: A



Appendix B EPL Water Discharge Points

Revision No: 0

Issue Date: 18/06/206

IRPL Document Number: 6-0019-220-PES-00-RP-0001

When printed this document is an uncontrolled version and must be checked against the Aconex electronic version for validity



Legend

- Discharge Points - EPL
- Rail Features
 - KM Chainage
- Hydro
 - Hydroline
- Chainages
 - Chainage (distance in meters from the southern limit of the proposal)
- CIZ
 - CIZ (Rev 4)

RUN BOUNDARY

WDP-3

14600

432100

432050

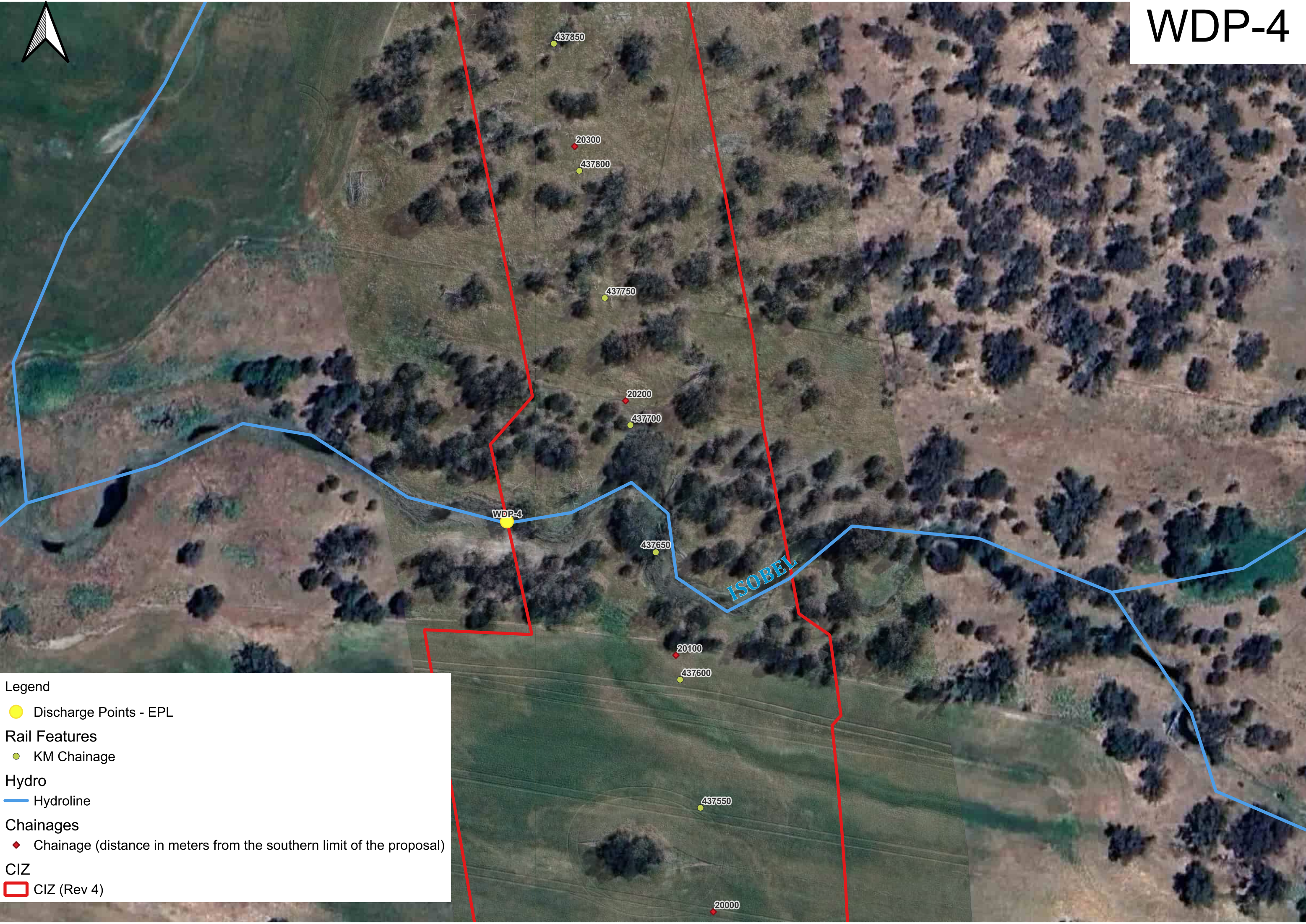
14500

432000

431950

14400

431900



Legend

- Discharge Points - EPL
- Rail Features**
 - KM Chainage
- Hydro**
 - Hydroline
- Chainages**
 - Chainage (distance in meters from the southern limit of the proposal)
- CIZ**
 - CIZ (Rev 4)

ISOBEL

WDP-4

437850

20300

437800

437750

20200

437700

437650

20100

437600

437550

20000



Legend

- Discharge Points - EPL
- Rail Features**
 - KM Chainage
- Hydro**
 - Farm Dam
 - Hydroline
- Chainages**
 - Chainage (distance in meters from the southern limit of the proposal)
- CIZ**
 - CIZ (Rev 4)

WDP-6, SS-07



Legend

- Discharge Points - EPL
- Rail Features**
 - KM Chainage
- Hydro**
 - ▲ Farm Dam
 - Hydroline
- Chainages**
 - ◆ Chainage (distance in meters from the southern limit of the proposal)
- CIZ**
 - CIZ (Rev 4)

POWDER HORN

454150

36600
454100

454050

36500
454000

453950

36400
453900

453850

36300
453800

453750

36200
453700

453650

36100
453600

453550

36000
453500

453450

35900
453400

453350

35800
453300

SS-07

WDP-6



Legend

- Discharge Points - EPL
- Rail Features**
 - KM Chainage
- Hydro**
 - Farm Dam
 - Hydroline
- Chainages**
 - Chainage (distance in meters from the southern limit of the proposal)
- CIZ**
 - CIZ (Rev 4)





Legend

- Discharge Points - EPL
- Rail Features
 - KM Chainage
- Hydro
 - Farm Dam
- Chainages
 - Chainage (distance in meters from the southern limit of the proposal)
- CIZ
 - CIZ (Rev 4)



Legend

● Discharge Points - EPL

Rail Features

● KM Chainage

Hydro

▲ Farm Dam

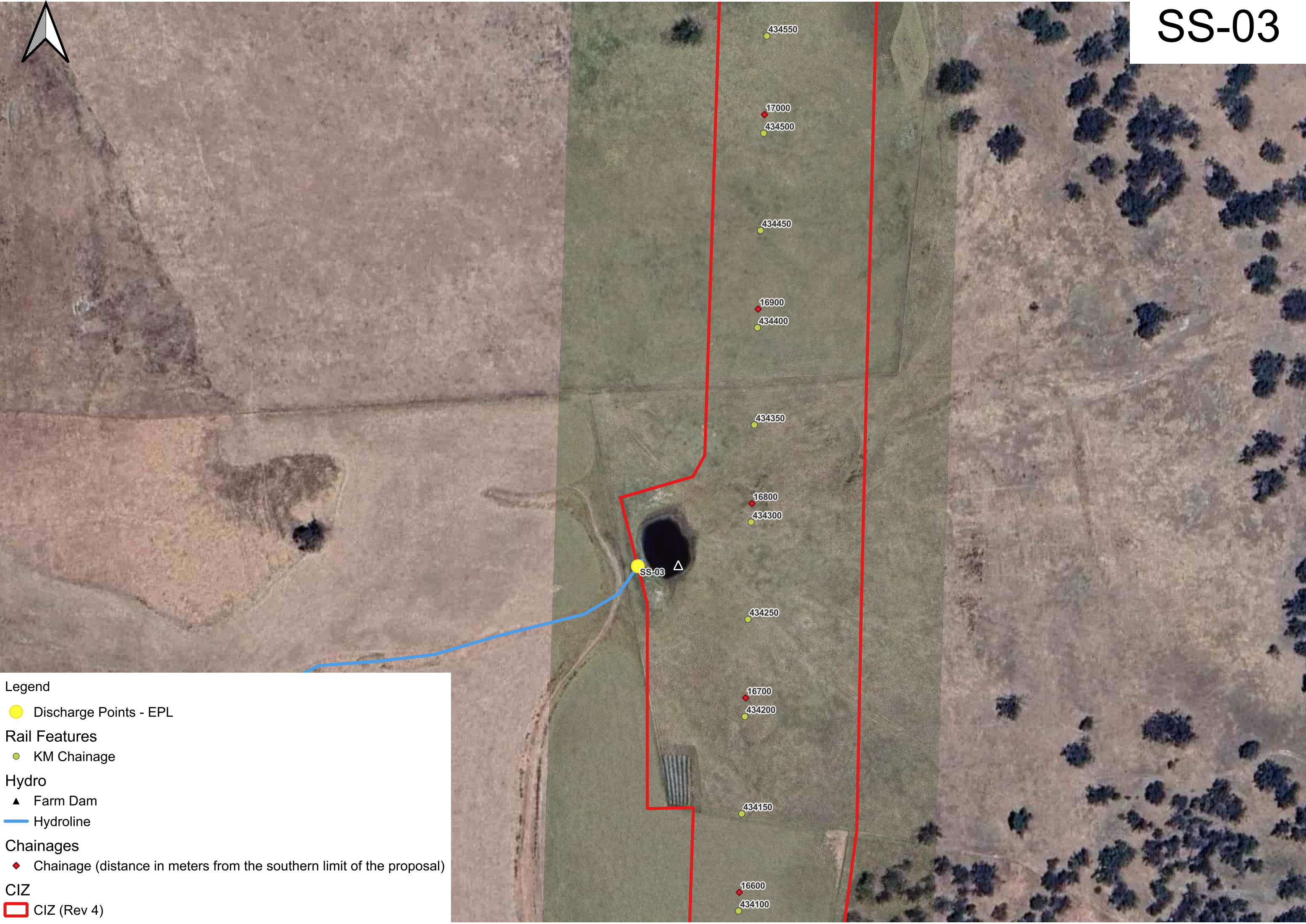
— Hydroline

Chainages

◆ Chainage (distance in meters from the southern limit of the proposal)

CIZ

□ CIZ (Rev 4)



Legend

- Discharge Points - EPL
- Rail Features**
 - KM Chainage
- Hydro**
 - ▲ Farm Dam
 - Hydroline
- Chainages**
 - ◆ Chainage (distance in meters from the southern limit of the proposal)
- CIZ**
 - CIZ (Rev 4)



SS-04

SS-04


Legend

 Discharge Points - EPL

Hydro

 Hydroline

CIZ

 CIZ (Rev 4)



IRONBONG

Legend

● Discharge Points - EPL

Rail Features

● KM Chainage

Hydro

▲ Farm Dam

— Hydroline

Chainages

◆ Chainage (distance in meters from the southern limit of the proposal)

CIZ

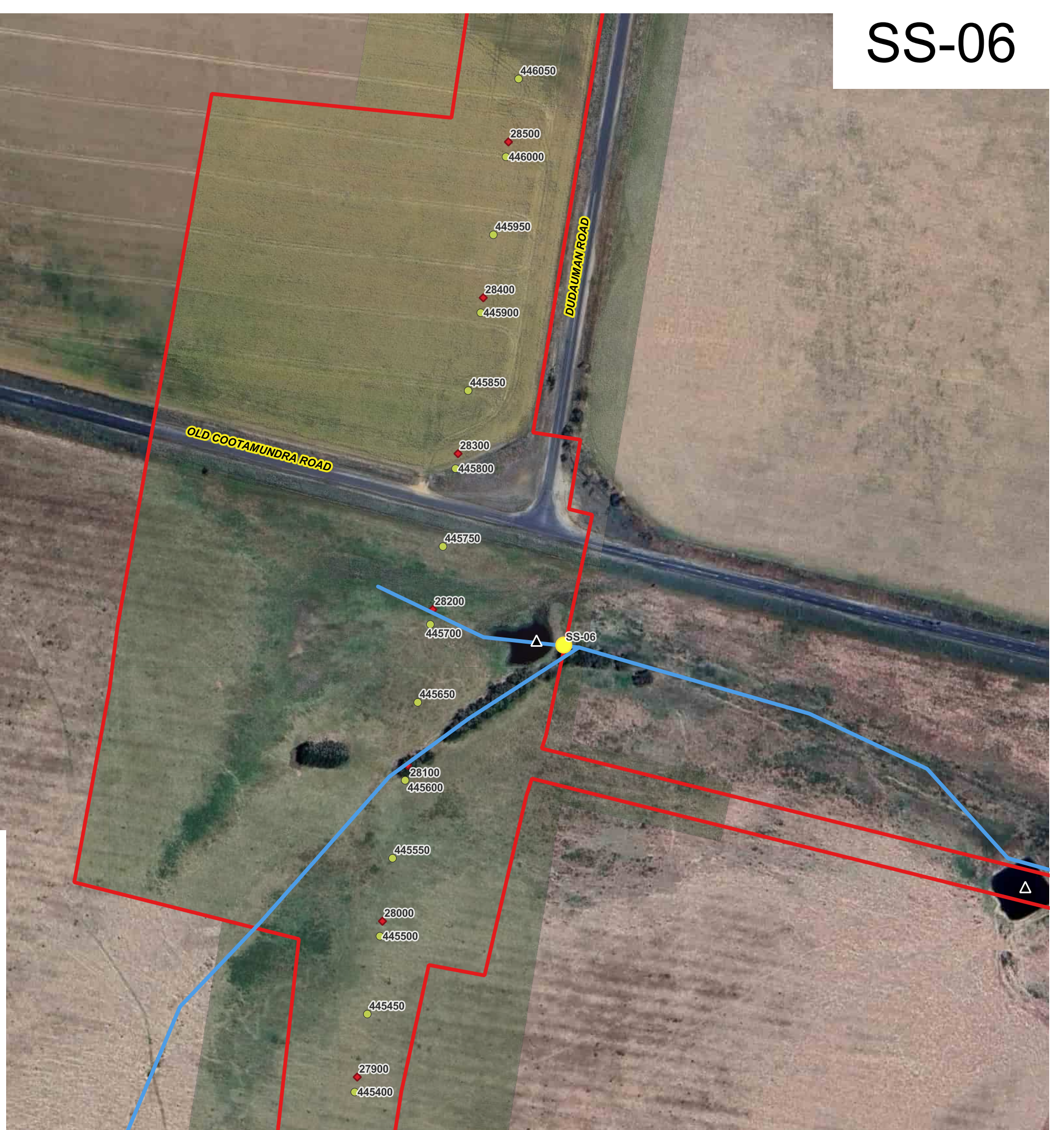
□ CIZ (Rev 4)





Legend

- Discharge Points - EPL
- Rail Features**
 - KM Chainage
- Hydro**
 - Farm Dam
 - Hydroline
- Chainages**
 - Chainage (distance in meters from the southern limit of the proposal)
- CIZ**
 - CIZ (Rev 4)





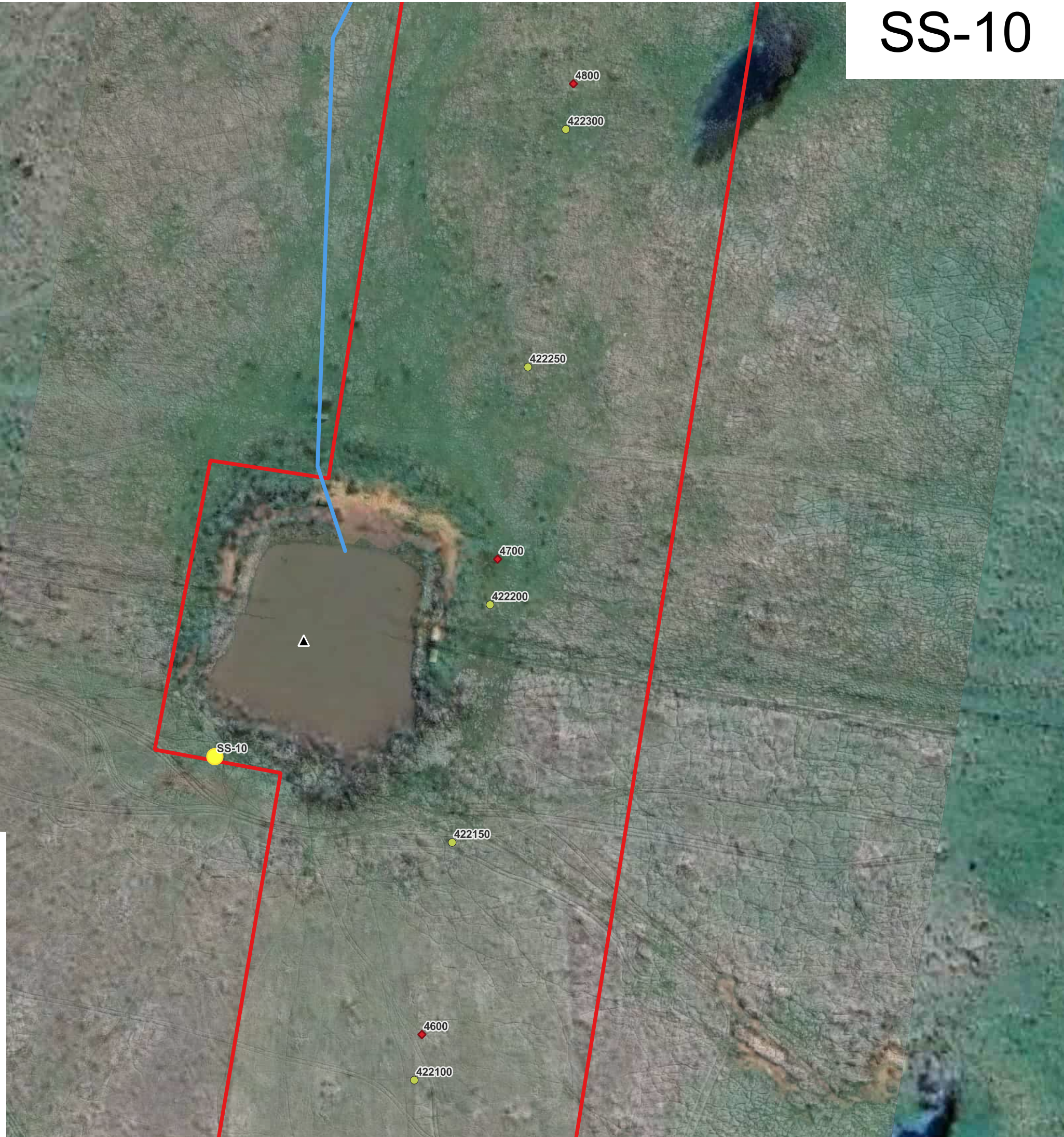
Legend

- Discharge Points - EPL
- Rail Features**
- KM Chainage
- Hydro**
- Farm Dam
- Hydroline
- Chainages**
- Chainage (distance in meters from the southern limit of the proposal)
- CIZ**
- CIZ (Rev 4)



Legend

- Discharge Points - EPL
- Rail Features
 - KM Chainage
- Hydro
 - ▲ Farm Dam
- Chainages
 - ◆ Chainage (distance in meters from the southern limit of the proposal)
- CIZ
 - CIZ (Rev 4)



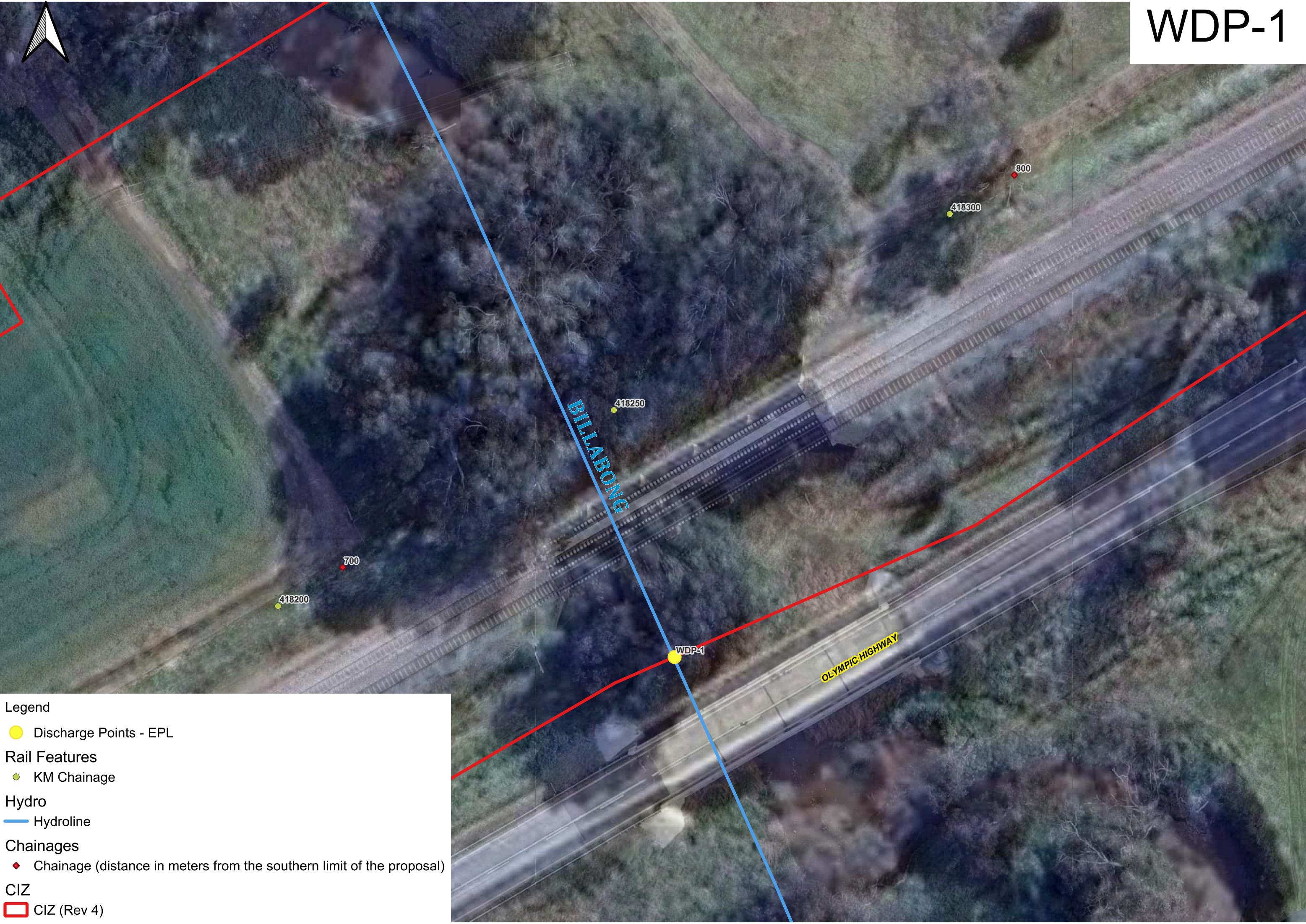
Legend

- Discharge Points - EPL
- Rail Features**
 - KM Chainage
- Hydro**
 - Farm Dam
 - Hydroline
- Chainages**
 - Chainage (distance in meters from the southern limit of the proposal)
- CIZ**
 - CIZ (Rev 4)



Legend

- Discharge Points - EPL
- Rail Features**
 - KM Chainage
- Hydro**
 - ▲ Farm Dam
- Chainages**
 - ◆ Chainage (distance in meters from the southern limit of the proposal)
- CIZ**
 - CIZ (Rev 4)



- Legend
- Discharge Points - EPL
 - Rail Features
 - KM Chainage
 - Hydro
 - Hydroline
 - Chainages
 - ◆ Chainage (distance in meters from the southern limit of the proposal)
 - CIZ
 - CIZ (Rev 4)



IRONBONG ROAD

ULANDRA

WDP-2

8100

425600

425550

8000

425500

425450

7900

425400

Legend

- Discharge Points - EPL
- Rail Features
 - KM Chainage
- Hydro
 - Hydroline
- Chainages
 - Chainage (distance in meters from the southern limit of the proposal)
- CIZ
 - CIZ (Rev 4)





Legend

- Discharge Points - EPL
- Hydro
 - ▲ Farm Dam
- Chainages
 - ◆ Chainage (distance in meters from the southern limit of the proposal)
- CIZ
 - CIZ (Rev 4)